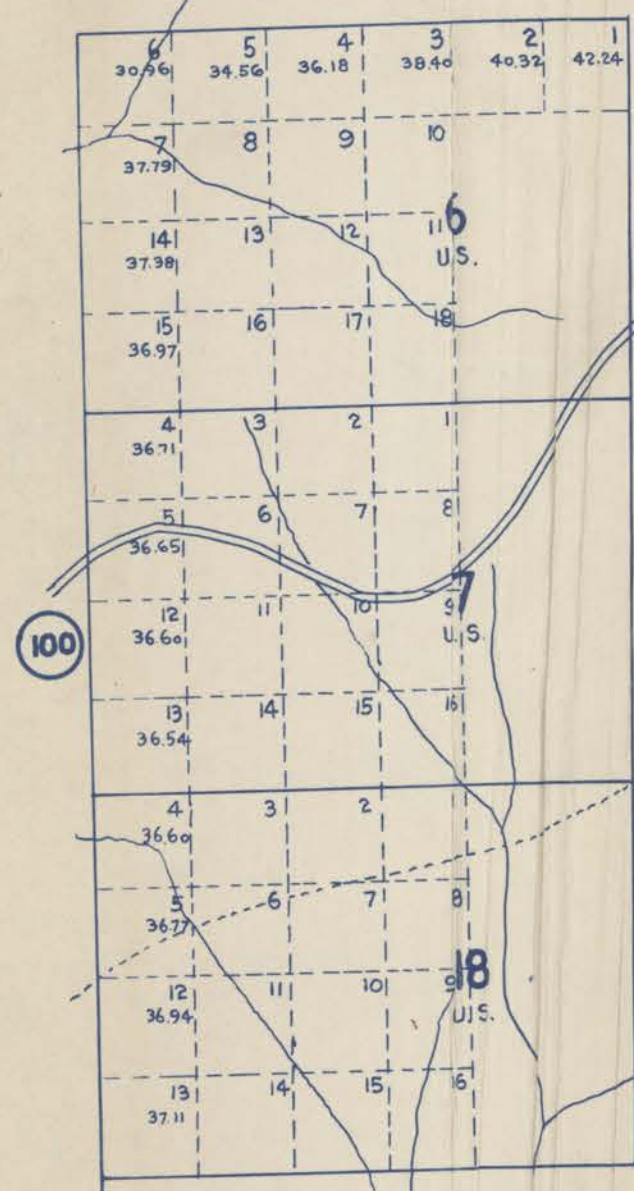


# TOWNSHIPS 4,5&6 N., RANGE 39 E.W.M. UMATILLA COUNTY OREGON

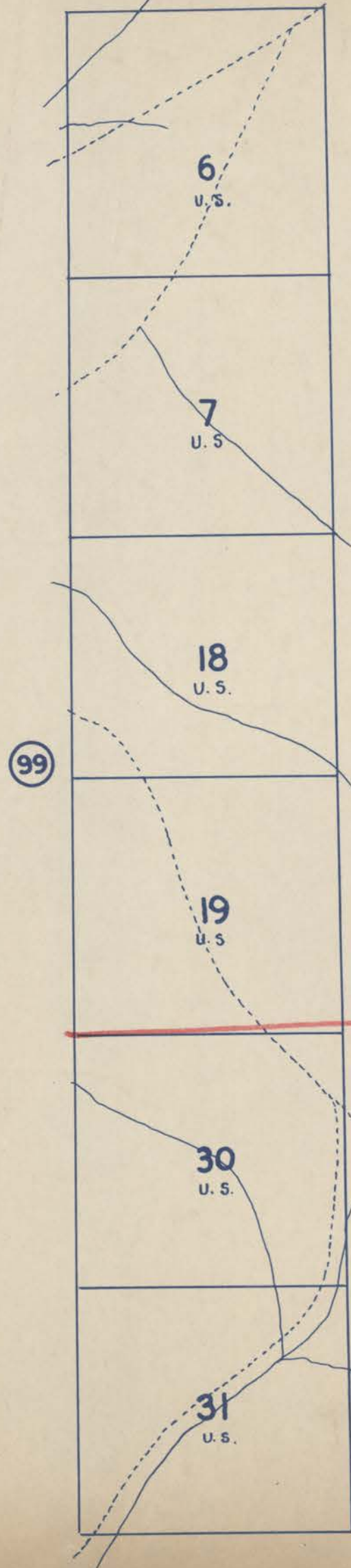
SCALE 2 IN. = 1 MILE.  
DATED 1932

CHAS. F. METSKER, CIVIL ENGINEER,  
215 COMMERCE BLDG. PORTLAND, ORE.  
930 1/2 PACIFIC AVE. TACOMA, WASH.

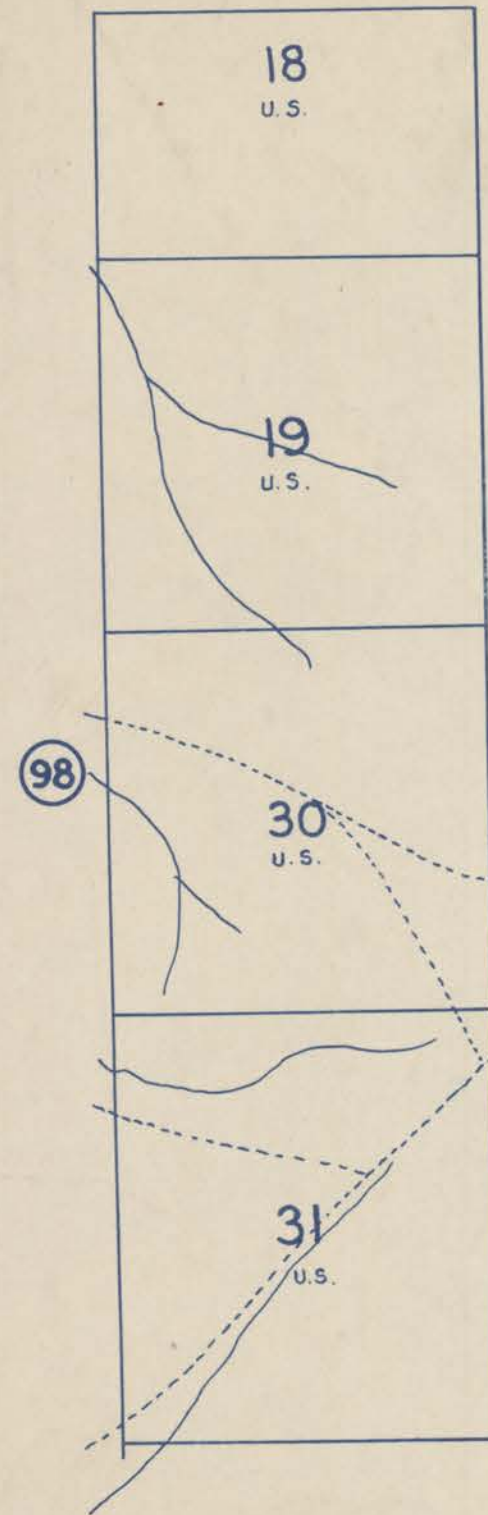
## 4 N. 39 E.



## 5 N. 39 E.



## 6 N. 39 E.



### - LEGEND -

- PAVED ROADS
- STATE HIGHWAYS
- MARKET ROADS
- DIRT ROADS
- INFERIOR ROADS
- RAILROADS
- TRAILS
- INTERMITTENT CREEKS
- SCHOOLS