

JF 395

NZ-4MM-138

3E-225

R17

4M-117

4M-119

6 5

32 33

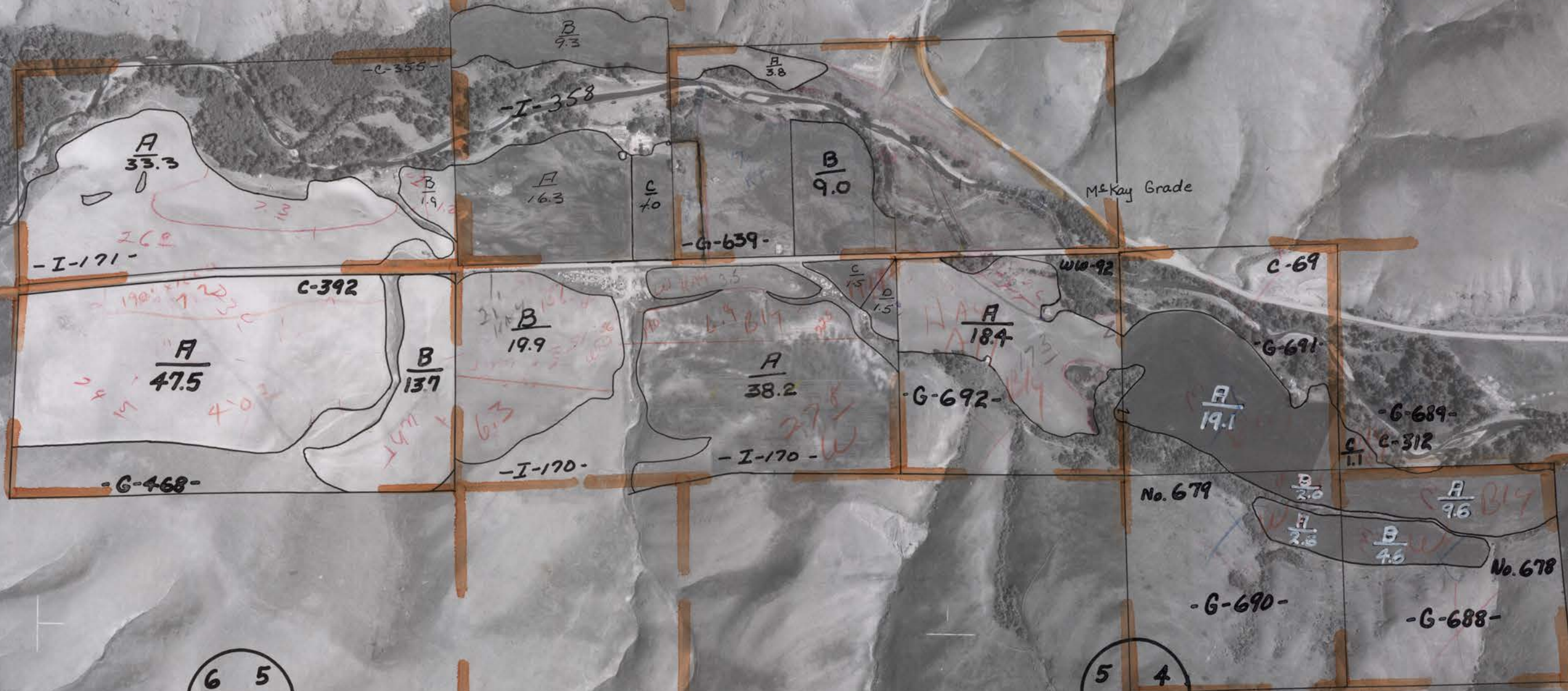
5 4

TIN-R33E

TIS-R33E

33 34

4 3



4M-140

6 5  
7 8

5 4  
8 9

4 3  
9 10

5-23-71

7 8  
18 17

8 9  
17 16

9 10  
16 15

C.F.I. 304.37

4M-192

4M-194