

1M-44
T3N-R34E

C.F.I. 304.37

NZ-2MM-42

4E-144
K-18H+L

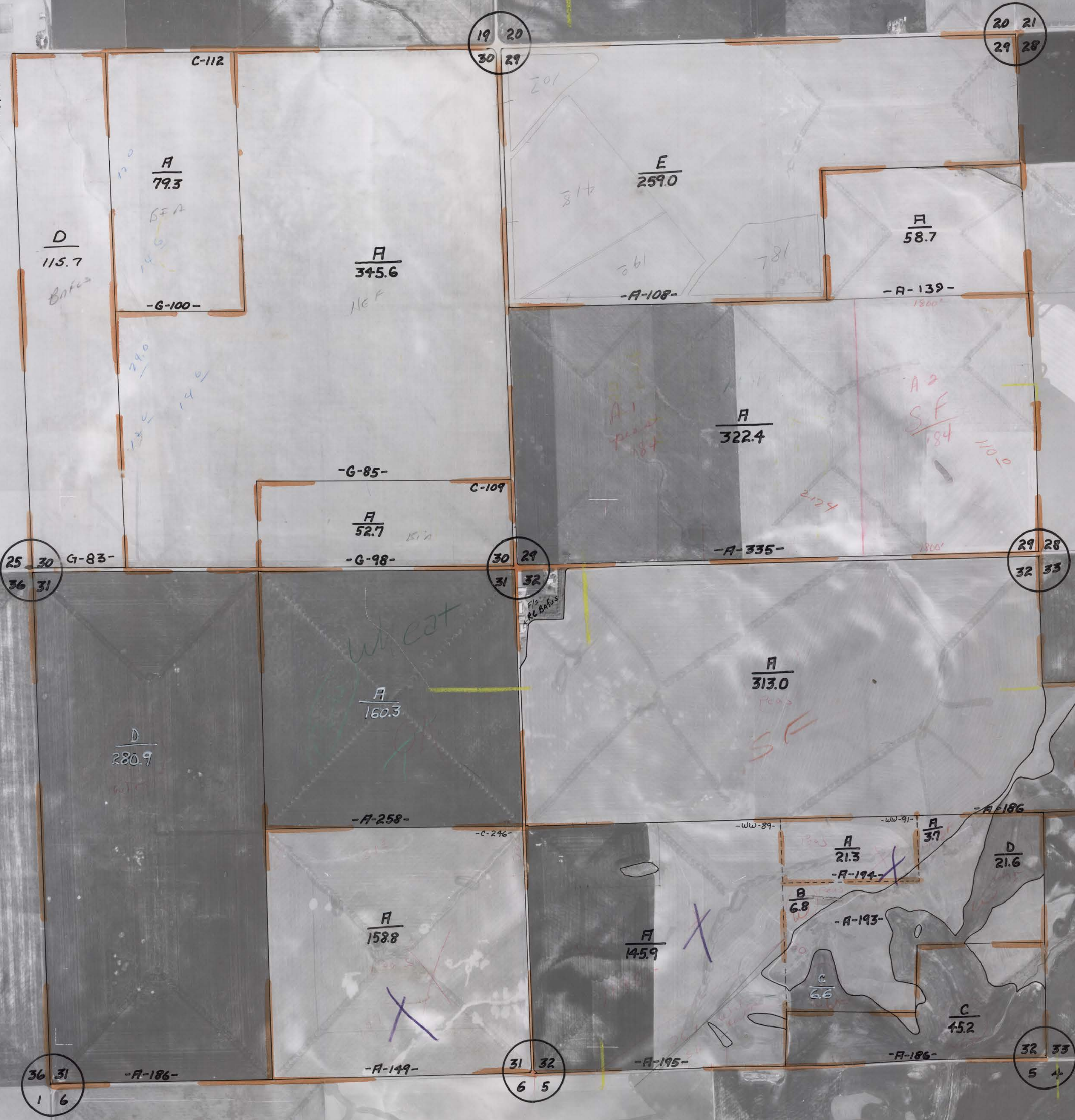
2M-40

2M-44

5-11-71

2M-57

2M-55



25 30
36 31

30 29
31 32

29 28
32 33

36 31
1 6

31 32
6 5

32 33
5 4

19 20
30 29

20 21
29 28