

2M-138

2M-140

T2N-R33E

NZ-2MM-147

4E-197

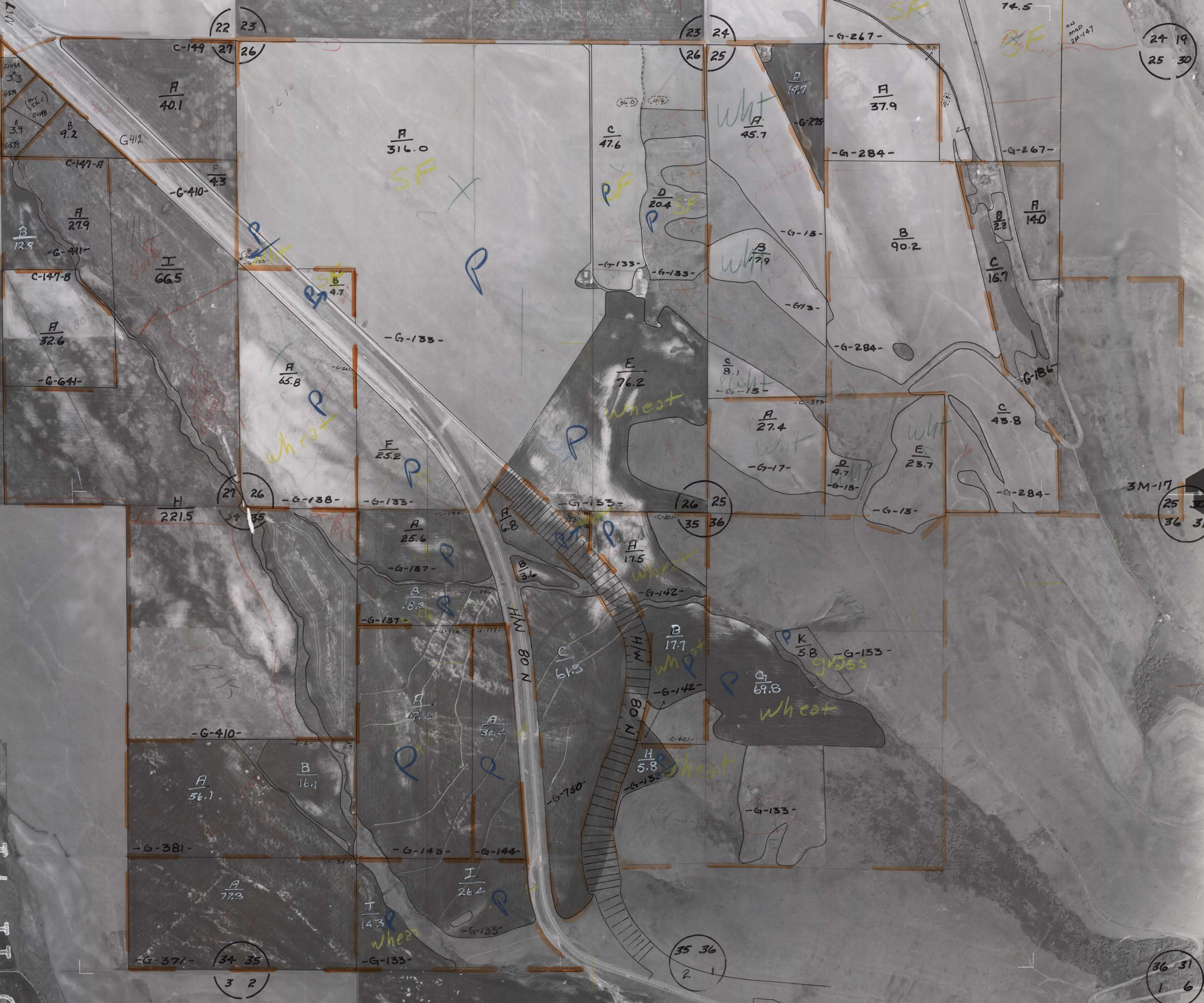
2M-149

12-11-5

C.F.I. 304,37

4M-20

4M-22



24 19
25 30

3M-17
25 30
36 31

36 31
1 6

22 23
27 26

23 24
26 25

27 26
34 35

26 25
35 36

34 35
3 2

35 36
2 1