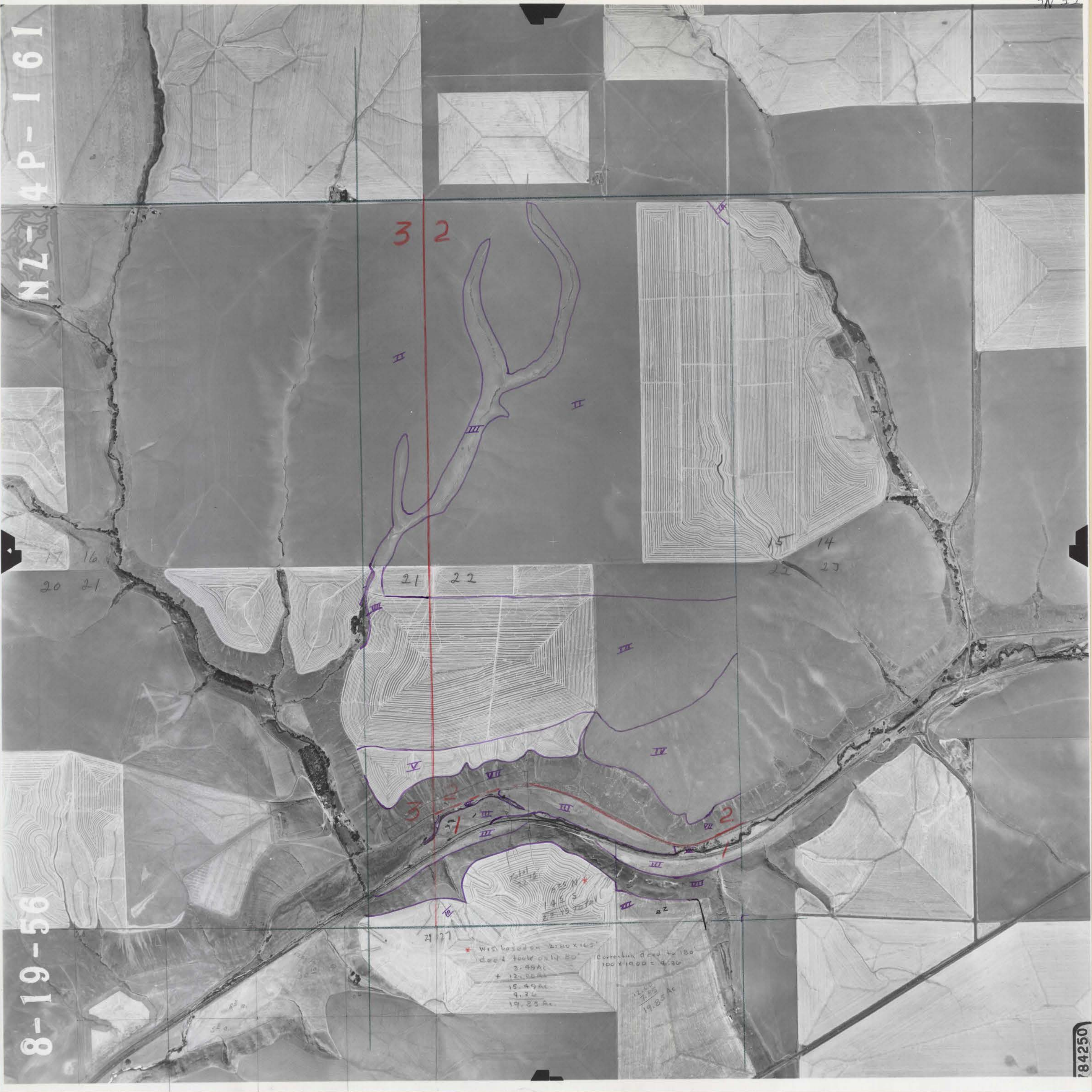


NZ-4P-161

8-19-56



17 16
20 21

3 2

21 22

15 14
22 23

21 21

* Wrs based on 2100 x 165'
 Dec 4 took only 80'
 3.48 Ac
 + 12.05 Ac
 15.49 Ac
 9.26
 19.23 Ac

Correction deed to 180'
 100 x 1900 = 4.30

12.05
 7.93
 19.85 Ac