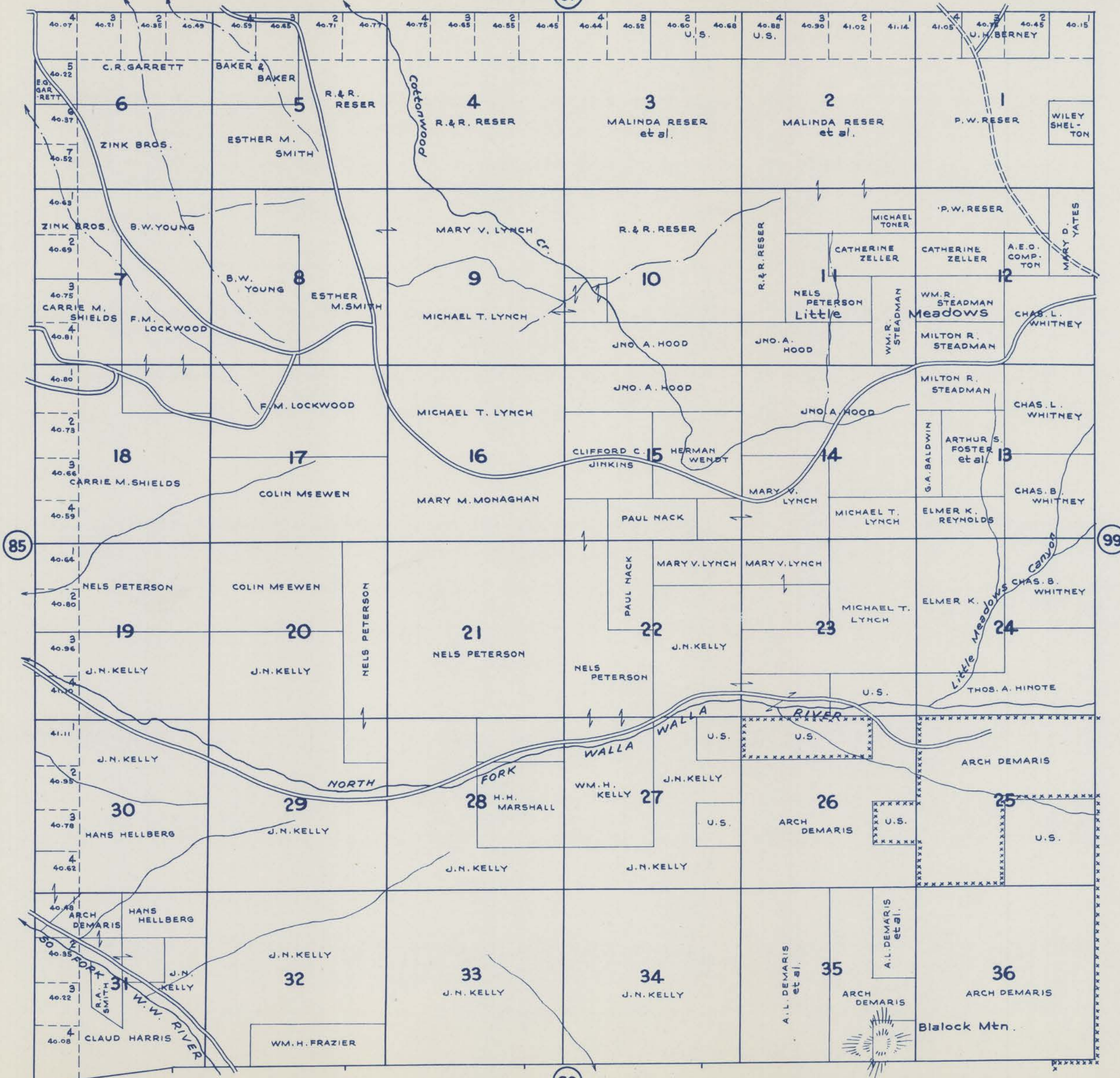


# TOWNSHIP 5 N., RANGE 37 E.W.M. UMATILLA COUNTY OREGON

SCALE 2 IN. = 1 MILE  
DATED 1932

CHAS. F. METSKER CIVIL ENGINEER  
215 COMMERCE BLDG. PORTLAND, ORE.  
930 1/2 PACIFIC AVE. TACOMA, WASH.

(91)



(85)

(99)

(93)

- LEGEND-**
- PAVED ROADS
  - STATE HIGHWAYS
  - MARKET ROADS
  - DIRT ROADS
  - INFERIOR ROADS
  - RAILROADS
  - TRAILS
  - INTERMITTENT CREEKS
  - SCHOOLS

COPYRIGHT BY CHAS. F. METSKER

NOTE - AREAS ENCLOSED BY CROSSES ARE PART OF UMATILLA NATL. FOREST.