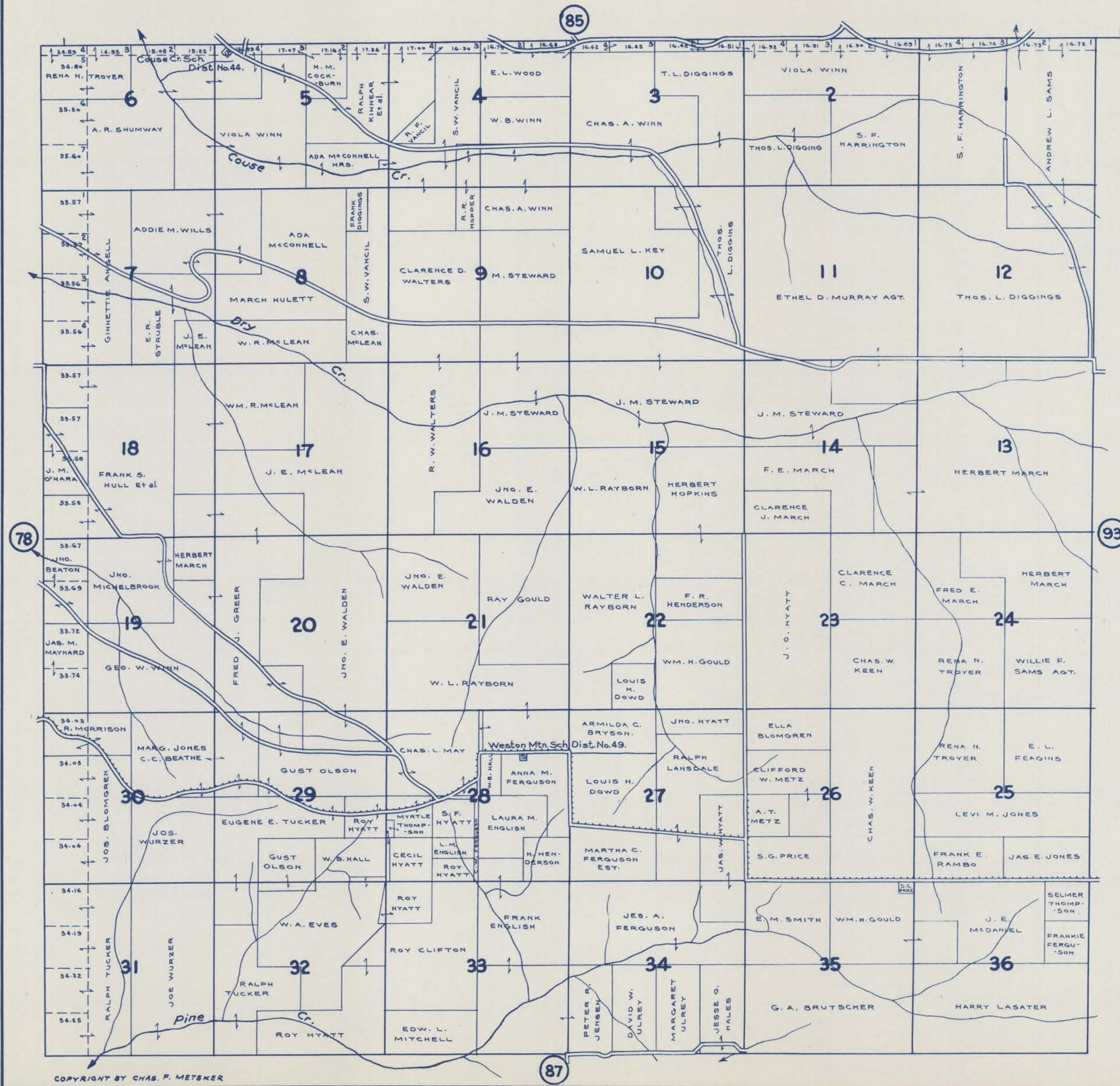


TOWNSHIP 4 N., RANGE 36 E.W.M.

SCALE 2 IN. = 1 MILE.
DATED 1932

UMATILLA COUNTY OREGON

CHAS. F. METSKER CIVIL ENGINEER
215 COMMERCE BLDG, PORTLAND, ORE.
930 1/2 PACIFIC AVE., TACOMA, WASH.



- LEGEND -**
- PAVED ROADS
 - STATE HIGHWAYS
 - MARKET ROADS
 - DIRT ROADS
 - INFERIOR ROADS
 - RAILROADS
 - TRAILS
 - INTERMITTENT CREEKS
 - SCHOOLS