

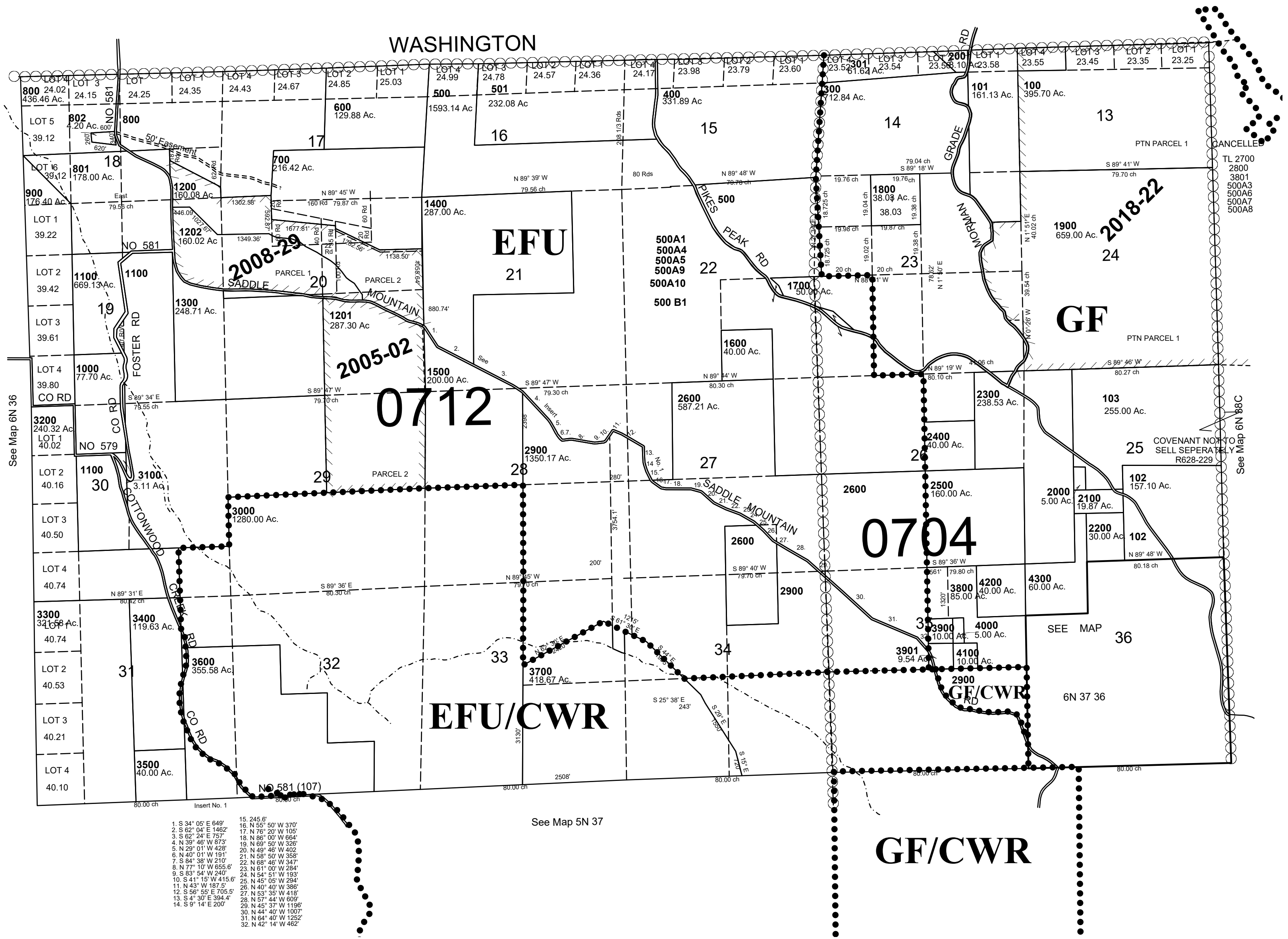
This map was prepared for assessment purposes

T6N R37E WM
UMATILLA COUNTY

12/02/2020

6N 37

1"=2000'



Insert No. 1

1. S 34° 05' E 649'	15. 245.6'
2. S 65° 04' E 462'	16. N 55° 50' W 379'
3. S 62° 24' E 577'	17. N 75° 50' W 1059'
4. N 25° 45' W 573'	18. N 86° 00' W 694'
5. N 29° 01' W 528'	19. N 86° 50' W 505'
6. N 45° 01' W 181'	20. N 86° 50' W 402'
7. S 64° 35' W 210'	21. N 88° 50' W 389'
8. N 77° 10' W 655.6'	22. N 81° 00' W 284'
9. S 82° 54' W 269'	23. N 86° 50' W 363'
10. S 41° 12' W 415.9'	24. N 45° 05' W 284'
11. N 83° 10' E 13.0'	25. N 40° 51' W 595'
12. S 68° 55' E 705.5'	26. N 53° 35' W 418'
13. S 47° 30' E 384.4'	27. N 57° 34' W 605'
14. S 9° 14' E 200'	28. N 45° 37' W 1186'
	29. N 64° 42' W 1057'
	30. N 42° 14' W 462'

6N 37