

This map was prepared for Assessment & Taxation purposes only and has not been prepared for legal, engineering or surveying purposes.

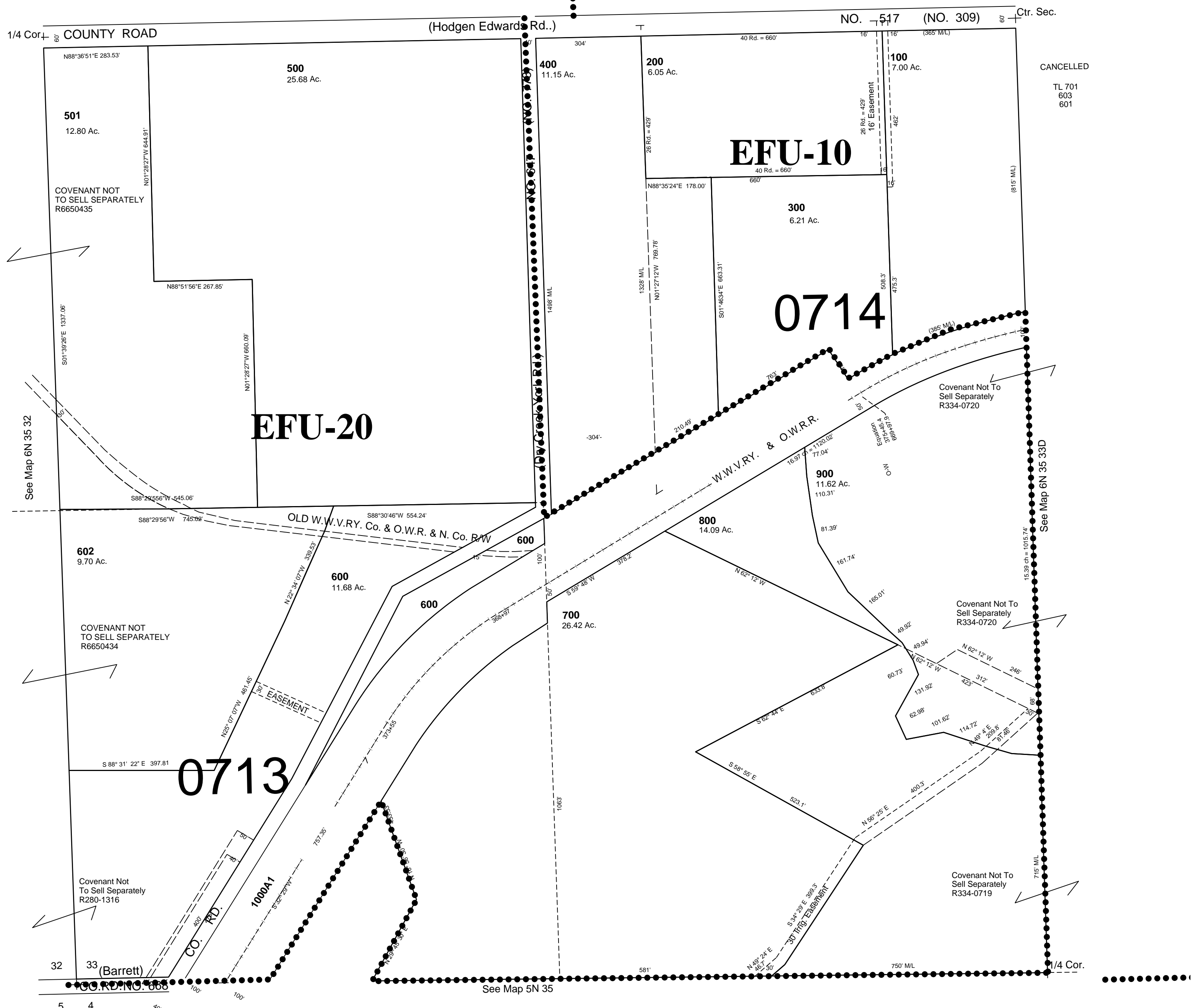
SW1/4 SEC 33 T6N R35E WM UMATILLA COUNTY

4/01/08

6N 35 33C
AERIAL PHOTO NO. NZ 6P-61

SCALE 1"=200'

See Map 6N 35 33B



6N 35 33C