

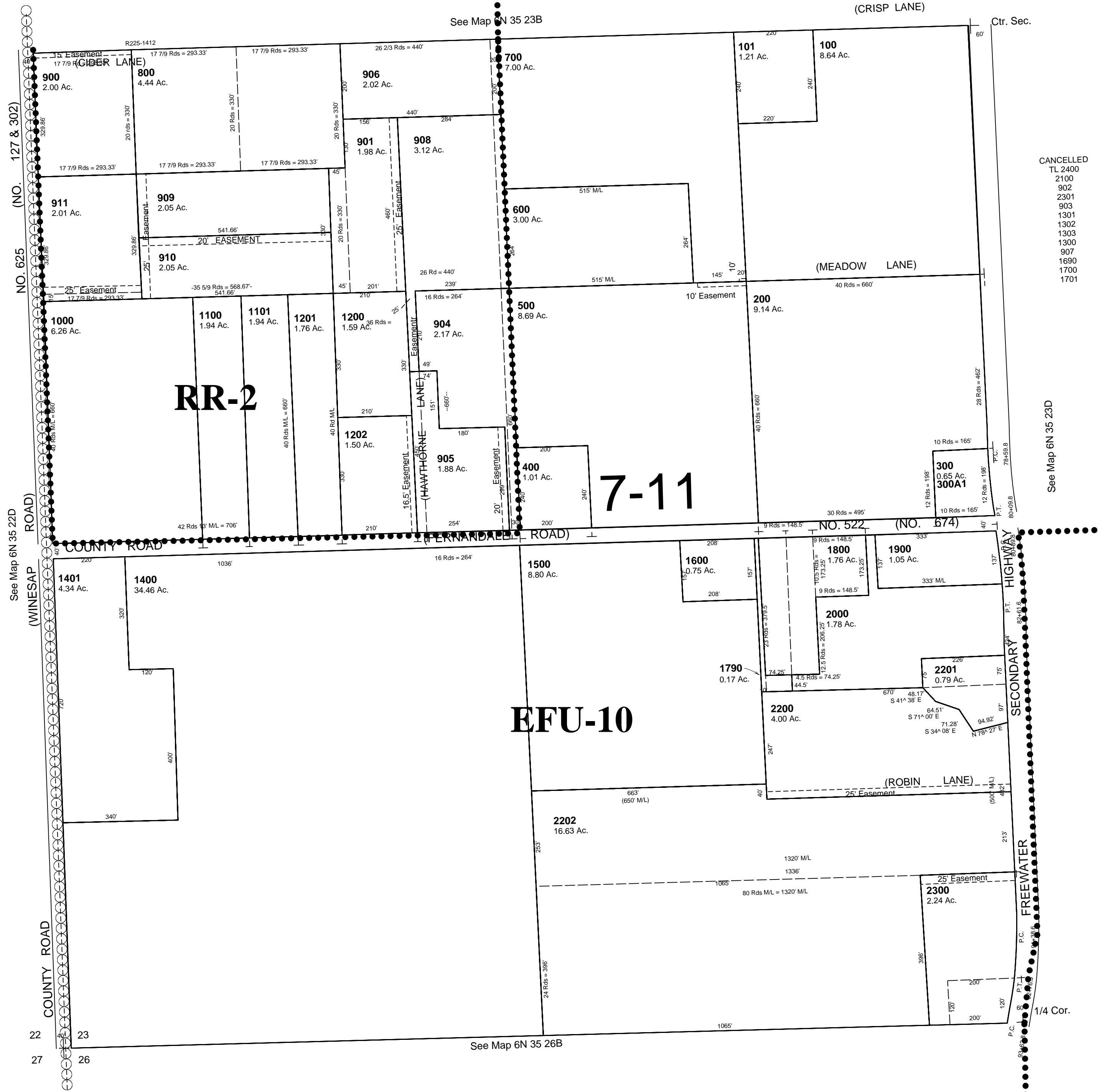
This map was prepared for assessment purposes

SW1/4 SEC 23 T6N R35E WM UMATILLA COUNTY

10/12/06

6N 35 23C
AERIAL PHOTO NO. 6P-19

SCALE 1"=200'



CANCELLED
2100
2101
2102
2103
2104
2105
2106
2107
2108
2109
2110
2111
2112
2113
2114
2115
2116
2117
2118
2119
2120
2121
2122
2123
2124
2125
2126
2127
2128
2129
2130
2131
2132
2133
2134
2135
2136
2137
2138
2139
2140
2141
2142
2143
2144
2145
2146
2147
2148
2149
2150
2151
2152
2153
2154
2155
2156
2157
2158
2159
2160
2161
2162
2163
2164
2165
2166
2167
2168
2169
2170
2171

See Map 6N 35 23D

6N 35 23C