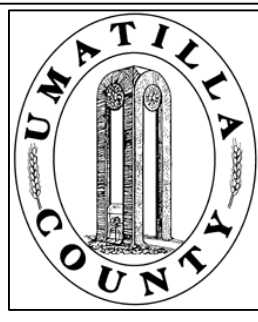


This map was prepared for Assessment purposes only.



SW1/4 NE1/4 SEC 14 T 5S R 31E WM

3/15/04

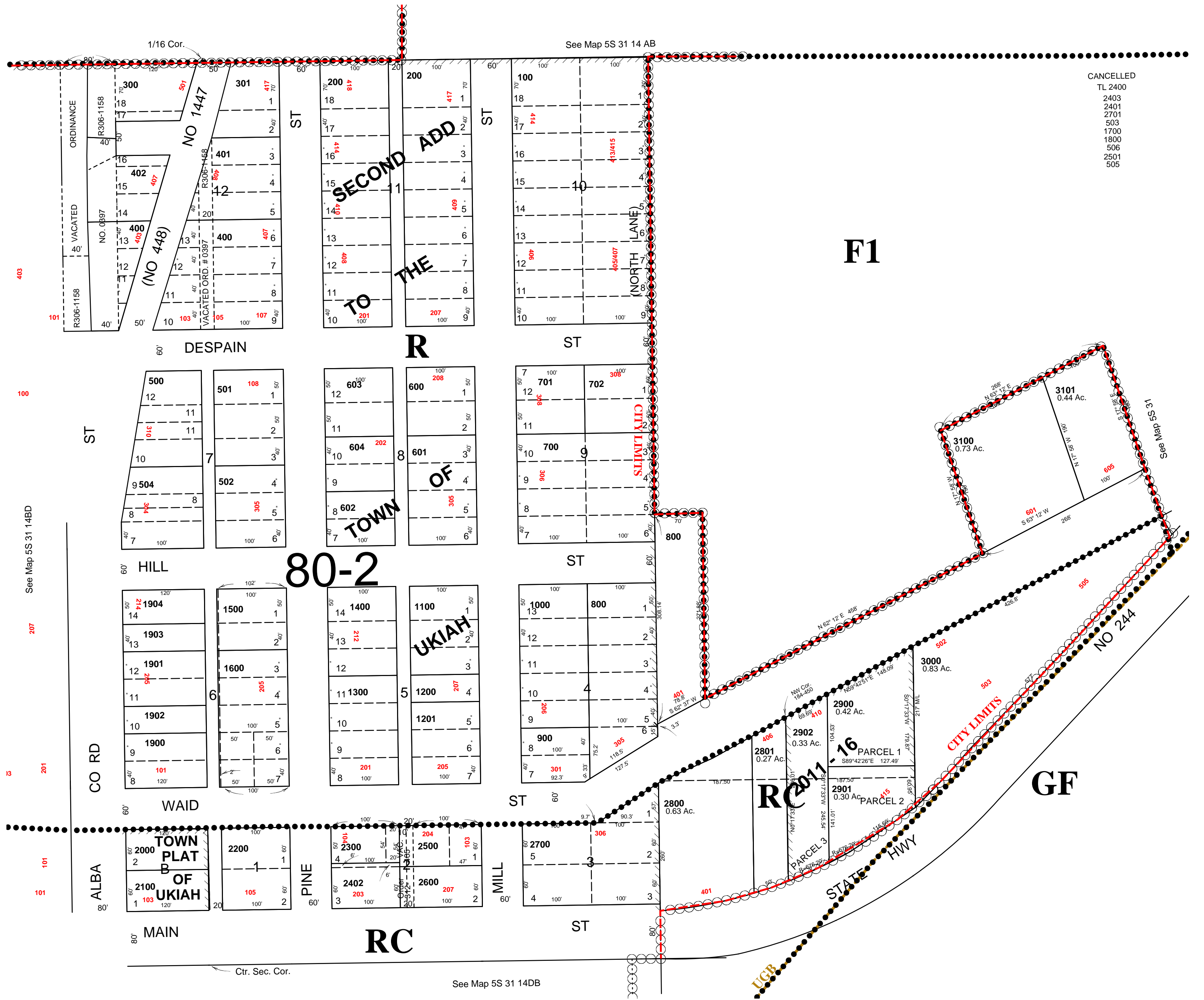
5S 31 14AC

UMATILLA COUNTY, OR

CITY OF UKIAH

SCALE: 1" = 100

See FIRM for areas subject to flood



- CANCELLED
- TL 2400
  - 2403
  - 2401
  - 2701
  - 503
  - 1700
  - 1800
  - 506
  - 2501
  - 505

See Map 5S 31 14BD

See Map 5S 31 14DB

5S 31 14AC