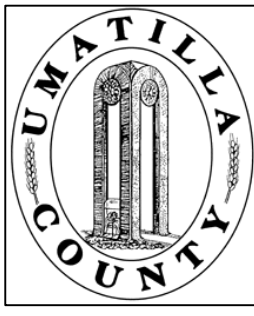


This map was prepared for Assessment purposes only.



NW 1/4 SEC 18 T 5N R 36 E WM UMATILLA COUNTY, OR

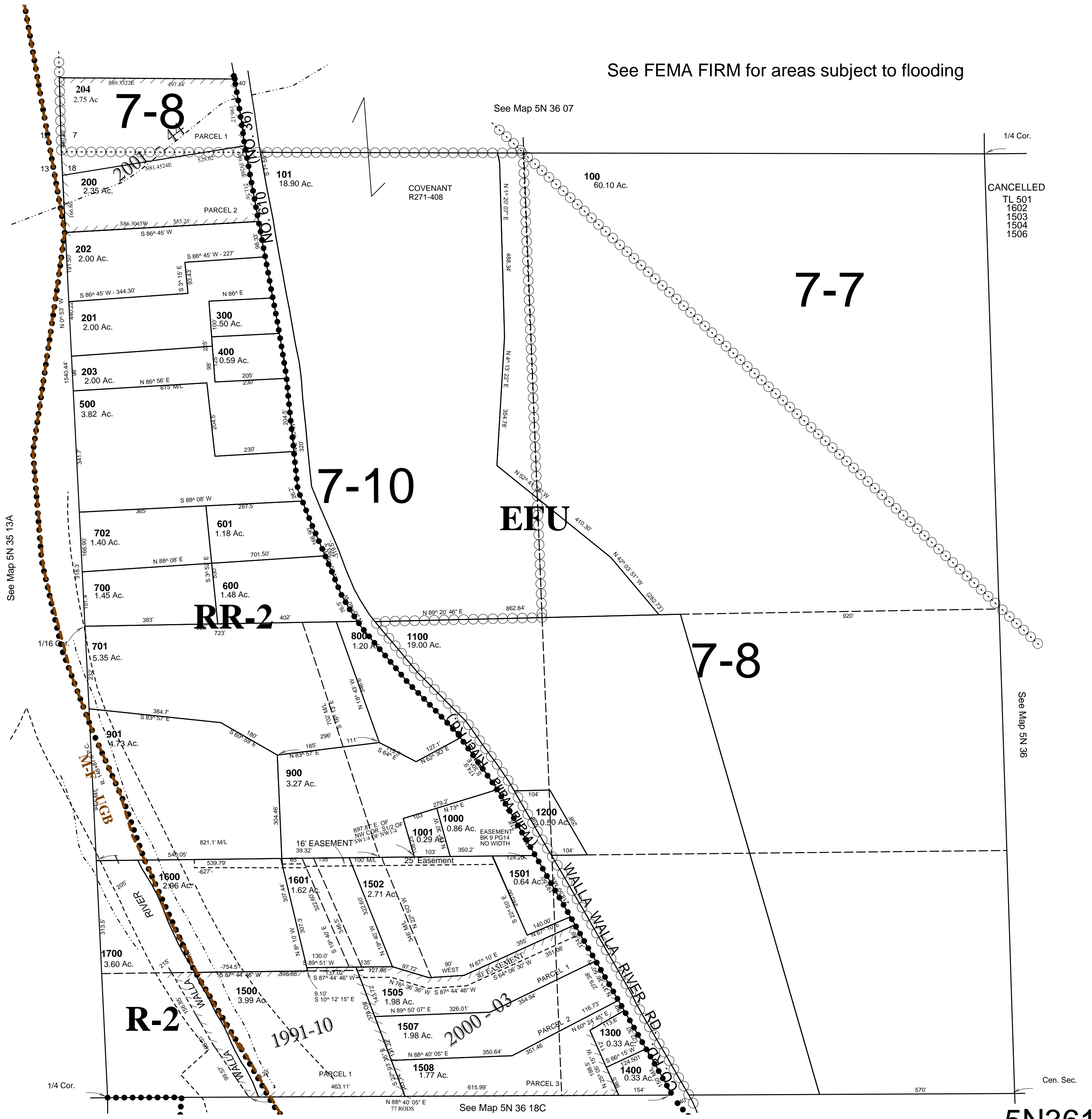
9/18/03

5N3618B

AERIAL PHOTO NO. 6P-120

SCALE: 1" = 200'

See FEMA FIRM for areas subject to flooding



CANCELLED
TL 501
1802
1503
1504
1506

5N3618B