

This map was prepared for Assessment & Taxation purposes only and was NOT prepared nor is it suitable for legal, engineering or surveying purposes.

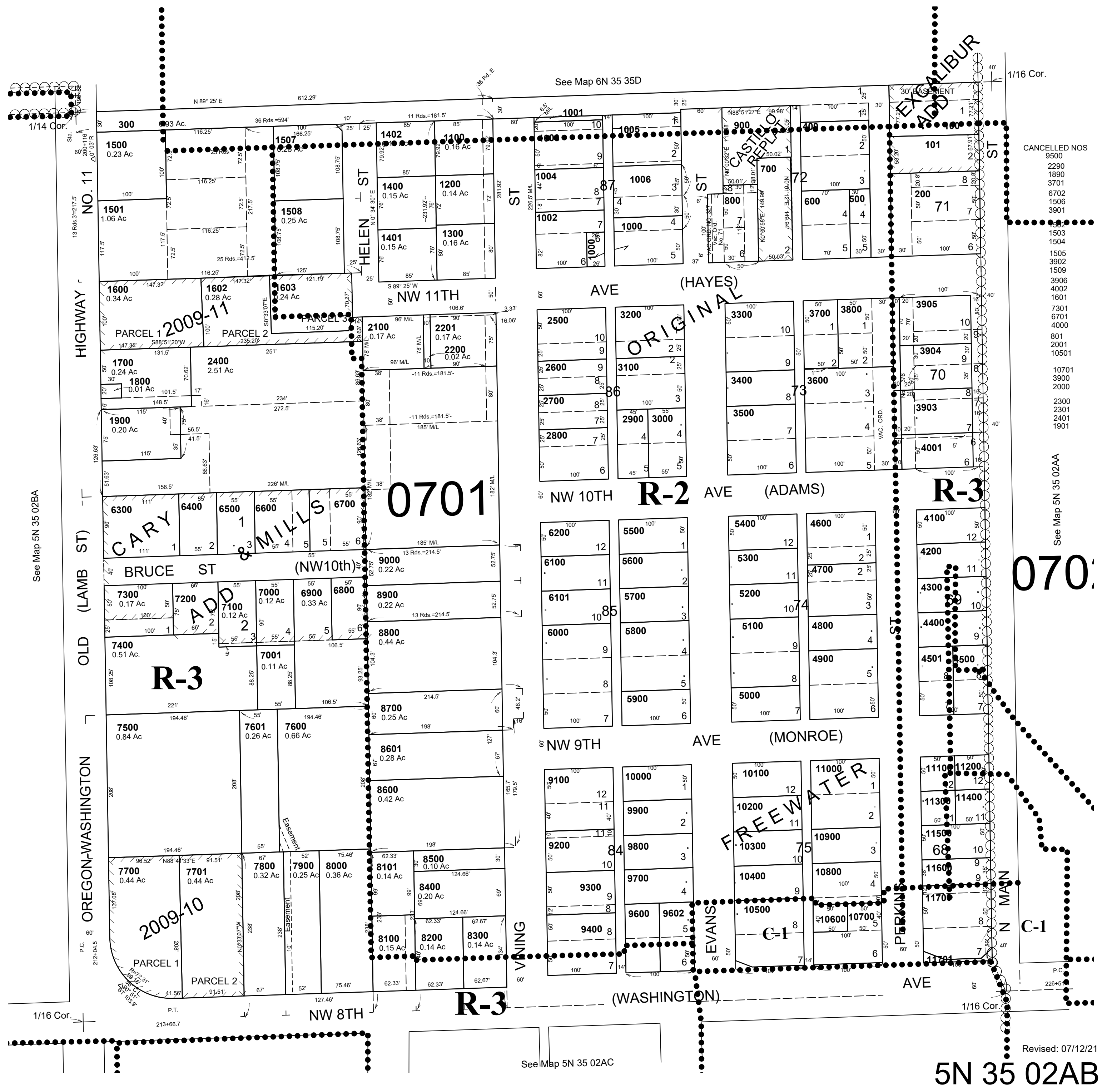
NW 1/4 NE 1/4 SEC 2 T5N R35E WM UMATILLA COUNTY

SCALE 1"=100'

5N 35 02AB

AERIAL PHOTO NO. 11P-82

CITY OF MILTON-FREEWATER



- CANCELLED NOS
- 5500
 - 2290
 - 1890
 - 3701
 - 6702
 - 1506
 - 3901
 - 1503
 - 1504
 - 1505
 - 3902
 - 1509
 - 3906
 - 4002
 - 1601
 - 7301
 - 6701
 - 4000
 - 801
 - 2001
 - 10501
 - 10701
 - 3900
 - 2000
 - 2300
 - 2301
 - 2401
 - 1901

0701

0701

5N 35 02AB

Revised: 07/12/21

See Map 5N 35 02BA

See Map 6N 35 35D

See Map 5N 35 02AC

See Map 5N 35 02AA