

This map was prepared for Assessment & Taxation purposes only and was NOT prepared nor is it suitable for legal, engineering or surveying purposes.

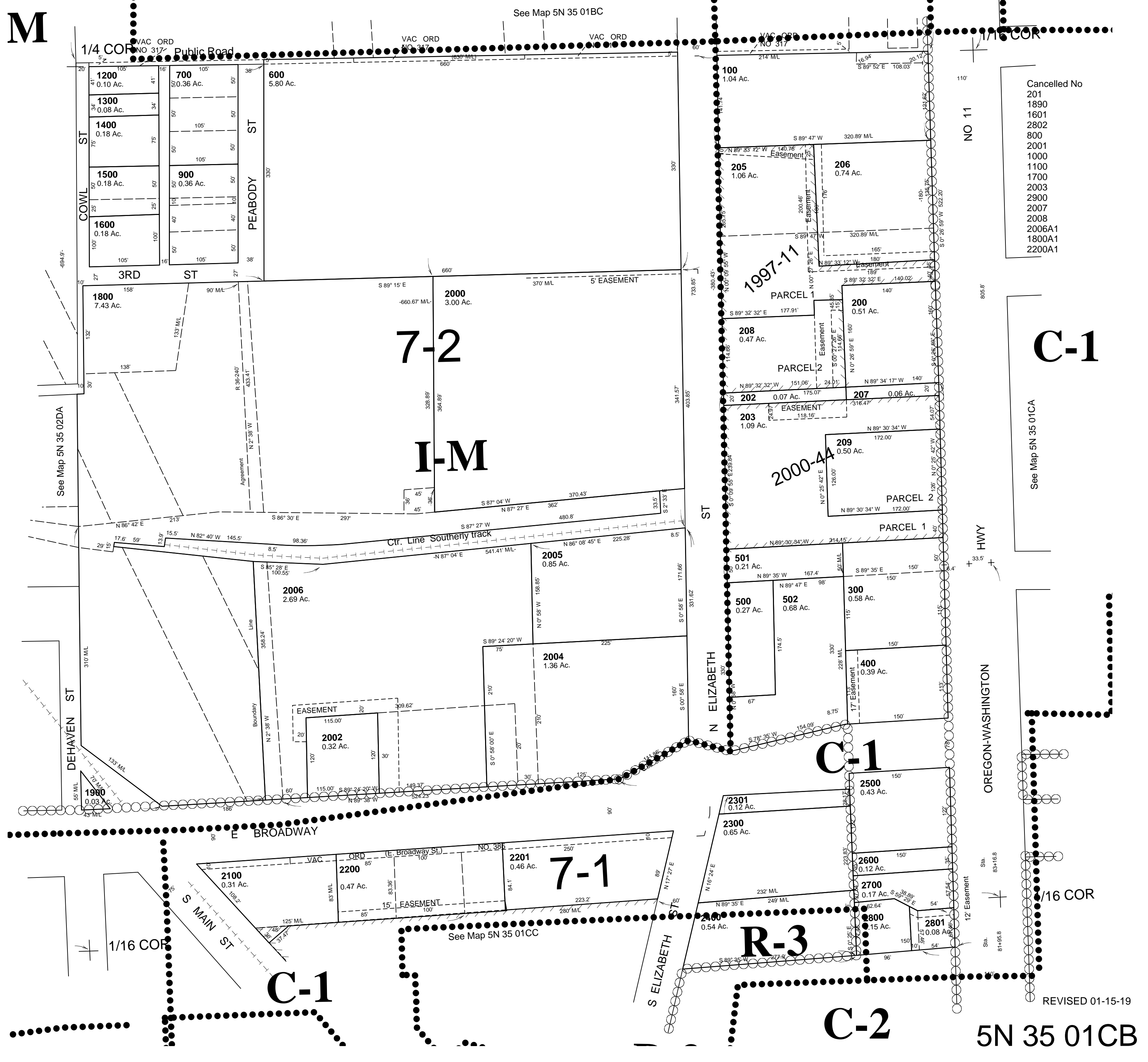
NW1/4 SW1/4 SEC 1 T5N R35E WM

5N 35 01CB

UMATILLA COUNTY

AERIAL PHOTO NO. 11P-82
CITY OF MILTON-FREEWATER

SCALE 1"=100'



- Cancelled No
- 201
 - 1890
 - 1601
 - 2802
 - 800
 - 2001
 - 1000
 - 1100
 - 1700
 - 2003
 - 2900
 - 2007
 - 2008
 - 2006A1
 - 1800A1
 - 2200A1

C-1

See Map 5N 35 01CA

C-1

C-1

R-3

C-2

5N 35 01CB

REVISED 01-15-19