

This map was prepared for Assessment and Taxation purposes only and has NOT been prepared for legal, engineering or surveying purposes.

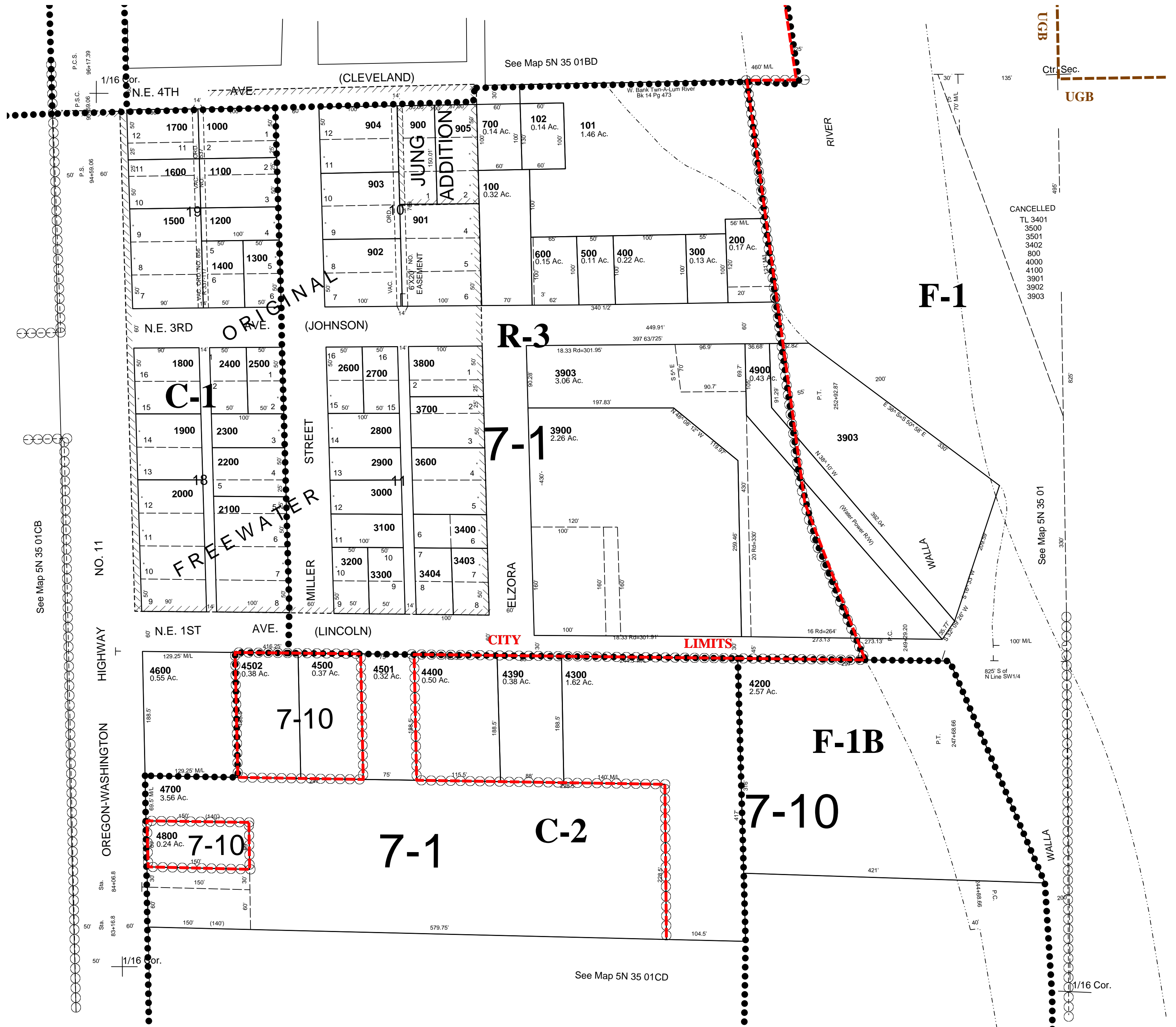
NE1/4 SW1/4 SEC 1 T5N R35E WM UMATILLA COUNTY

SCALE 1"=100'

10/04/06

5N 35 01CA
AERIAL PHOTO NO. 11P-82

Milton-Freewater City & Urban Growth Area
See FEMA FIRM for areas subject to flooding



5N 35 01CA