

This map was prepared for assessment purposes

NE1/4 T5N R29E WM
UMATILLA COUNTY
1"=1000'

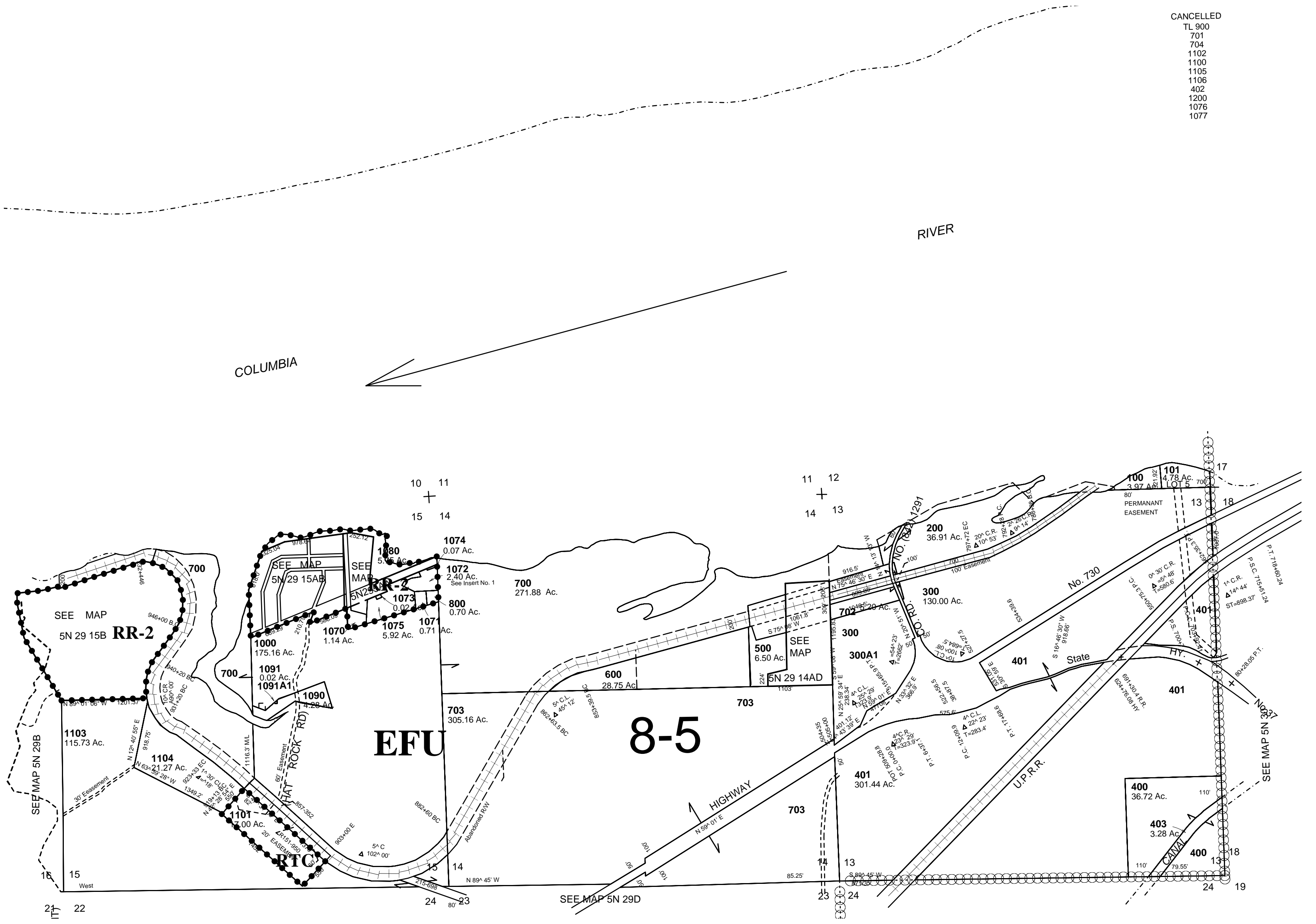
2/28/05

5N 29A

AERIAL PHOTO NO. 1P 63-67

HAT ROCK AREA

- CANCELLED
- TL 900
- 701
- 704
- 1102
- 1100
- 1105
- 1106
- 402
- 1200
- 1076
- 1077



5N 29A