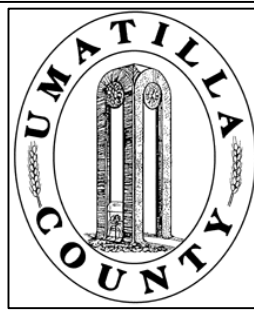


This map was prepared for Assessment purposes only.



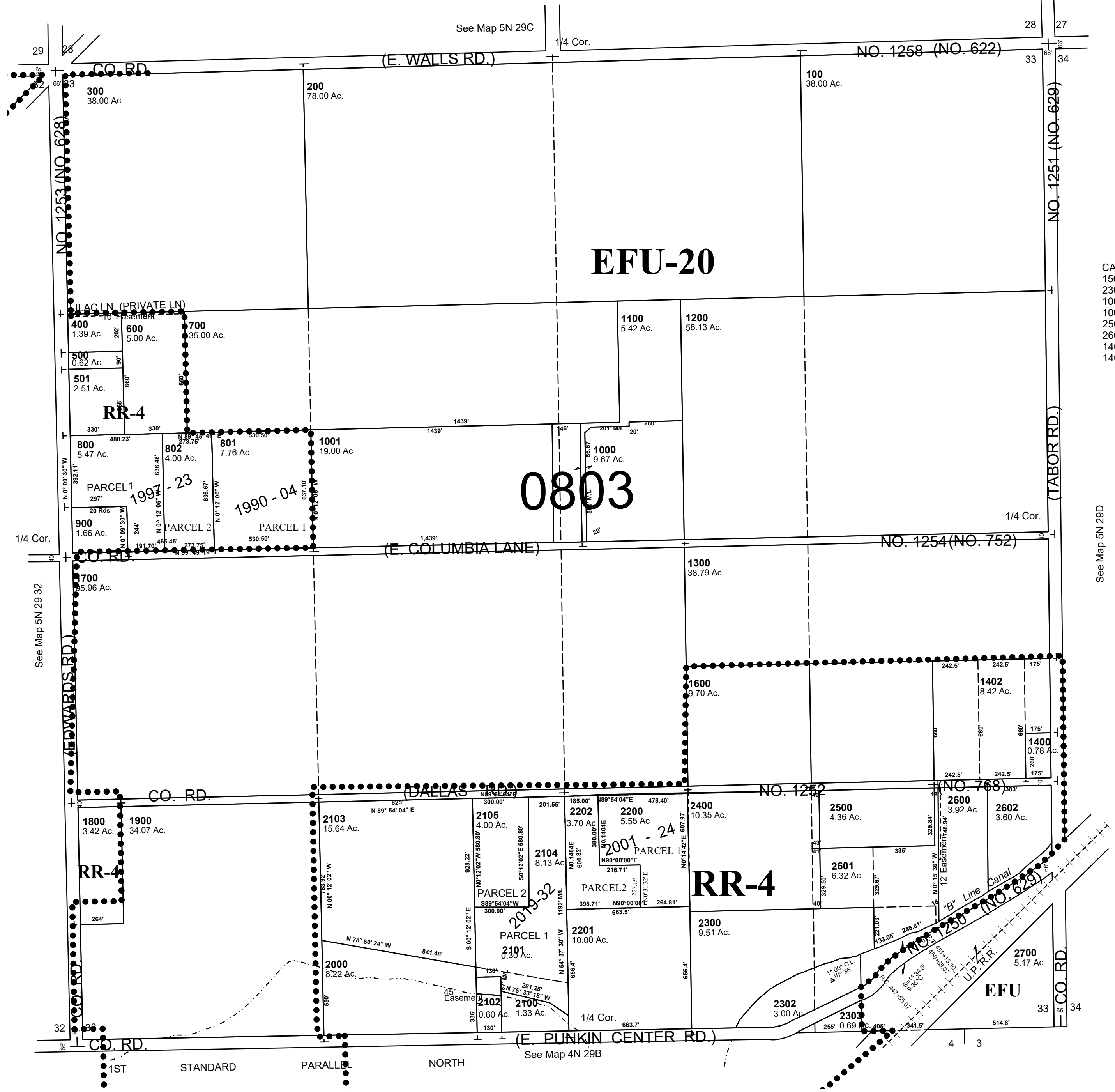
SEC 33 T5N R29E WM UMATILLA COUNTY, OR

2/1/20

5N2933

AERIAL PHOTO NO. NZ-IP-98

SCALE: 1" = 400'



CANCELLED
 1500
 2301
 1002
 1003
 2501
 2603
 1403
 1401

See Map 5N 29D

See Map 5N 2932

See Map 4N 29B

5N2933