

This map was prepared for assessment purposes

NE 1/4 T5N R28E WM UMATILLA COUNTY

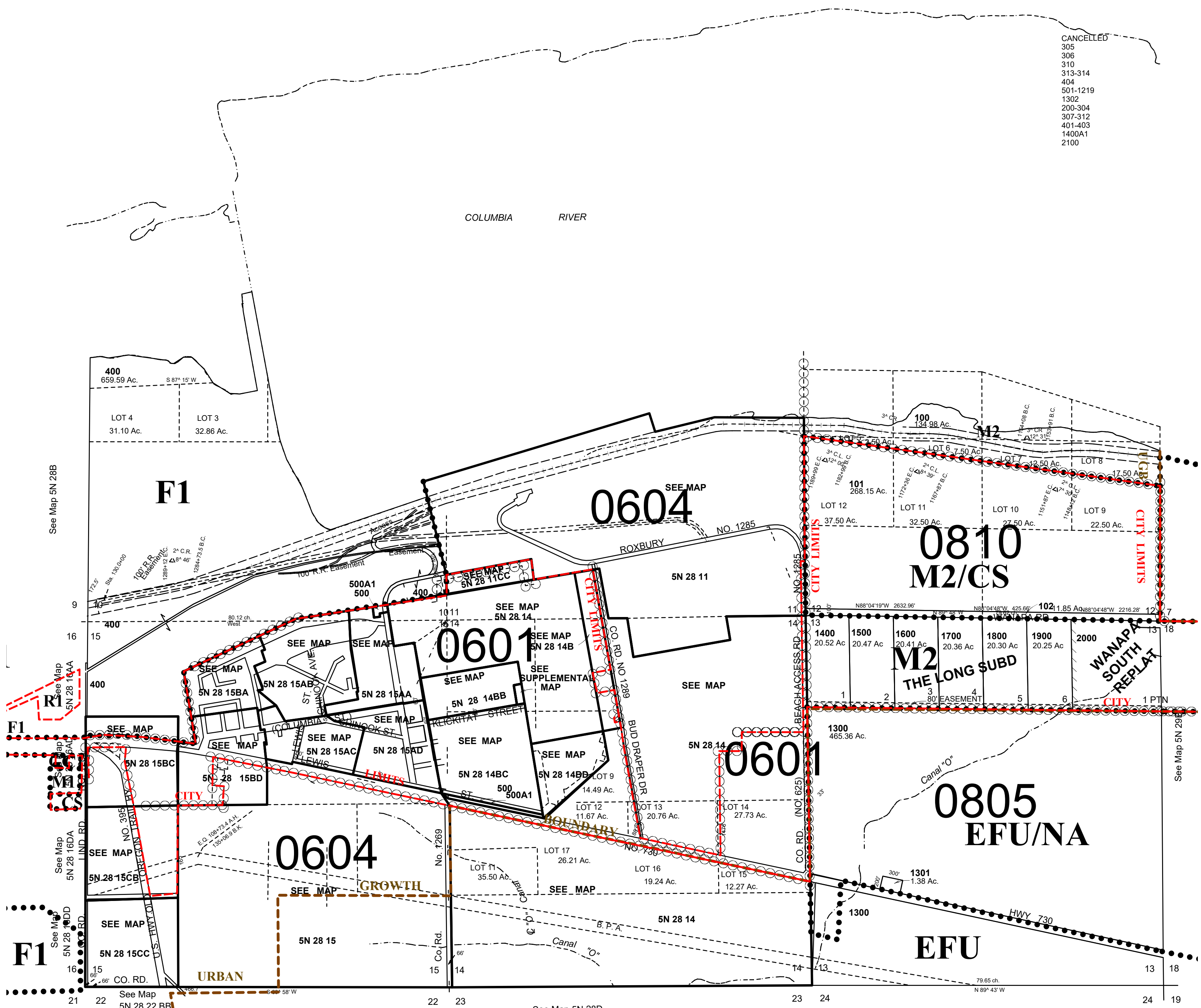
SCALE 1"=1000'

6/11/21

5N 28A

AERIAL PHOTO NO. NZ 1P 58-60 & 102-103
Umatilla City & Urban Growth Area

CANCELLED
305
306
310
313-314
404
501-1219
1302
200-304
307-312
401-403
1400A1
2100



5N 28A