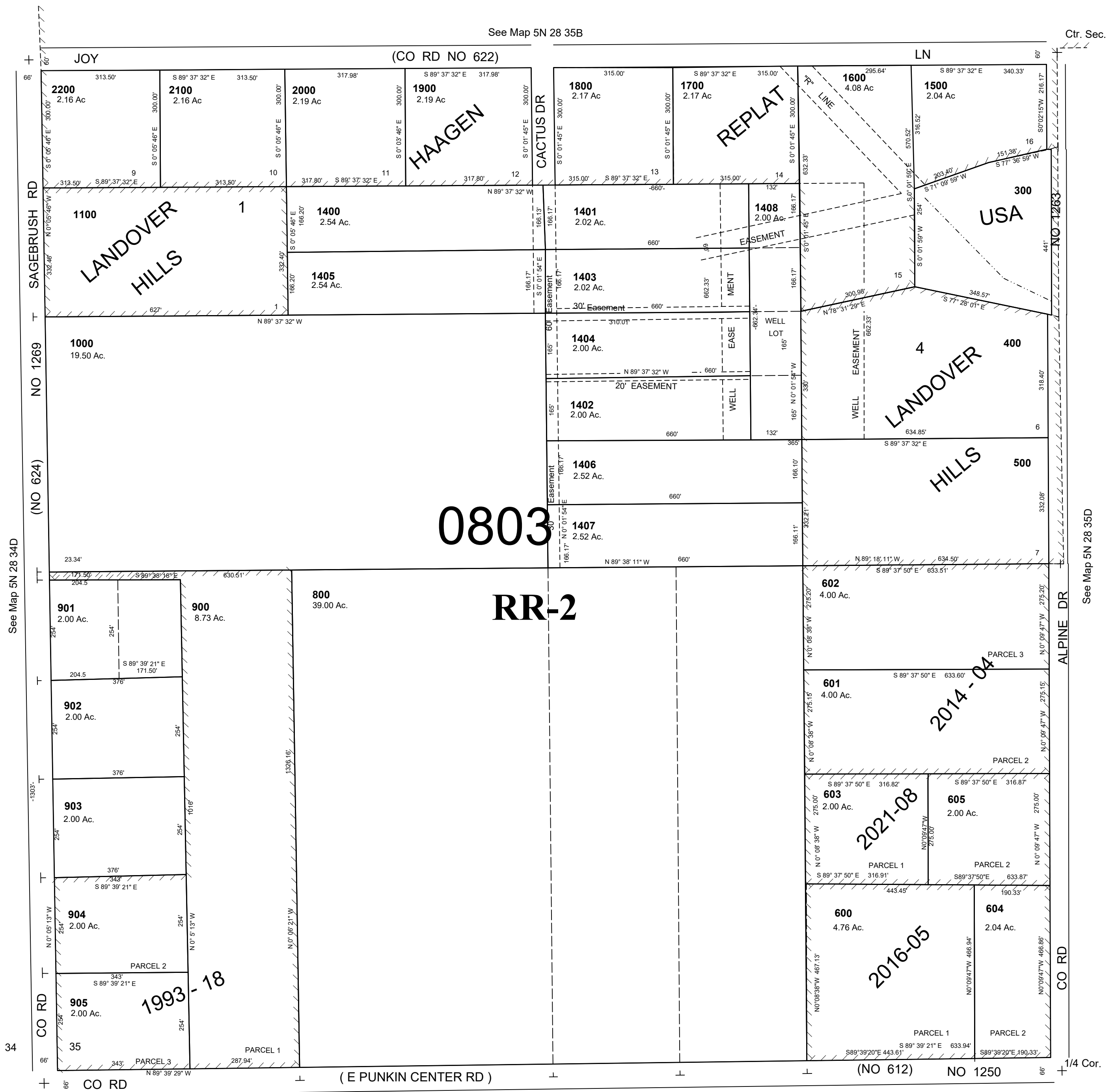


This map was prepared for assessment purposes

SW1/4 SEC 35 T5N R28E WM UMATILLA COUNTY

5N 28 35C
AERIAL PHOTO NO. 1P-103

SCALE 1"=200'



CANCELLED
 TL 700
 1409
 1410
 1411
 906
 1200
 1300
 100
 200

0803

RR-2

1993-18

2021-08

2016-05

2014-04

5N 28 35C