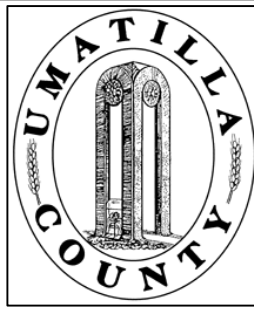


This map was prepared for Assessment purposes only.



SW1/4 SEC 34 T5N R28E WM UMATILLA COUNTY, OR

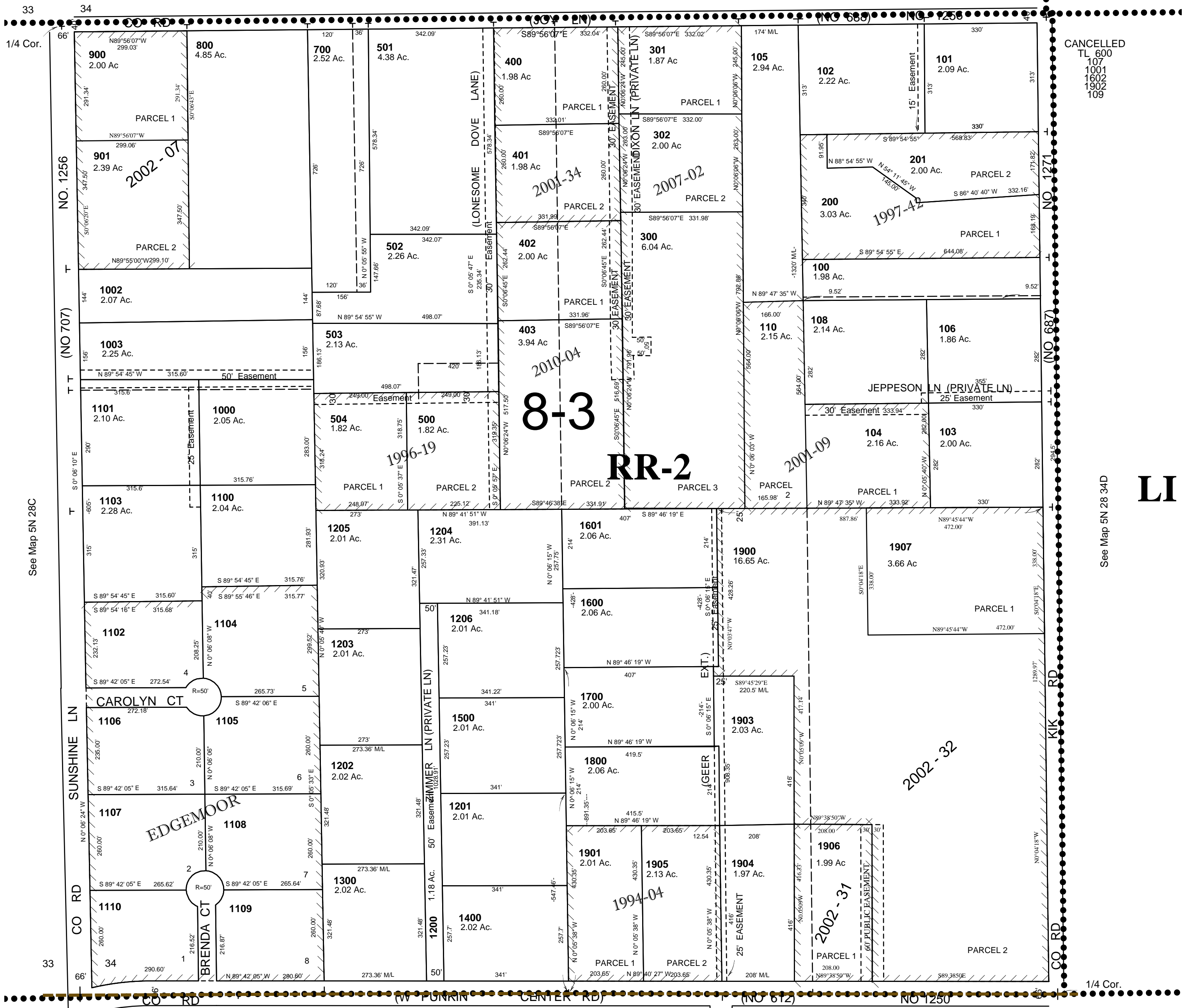
SCALE: 1" = 200'

5N2834C

Aerial Photo No. NZ-1P-104

See Map 5N 28 34B

Cntr. Sec.



CANCELLED
TL 600
107
1001
1682
1902
109

8-3

RR-2

LI

HERMISTON UGB

5N2834C