

This map was prepared for assessment purposes

NE1/4 NE1/4 SEC 18 T5N R28E WM UMATILLA COUNTY

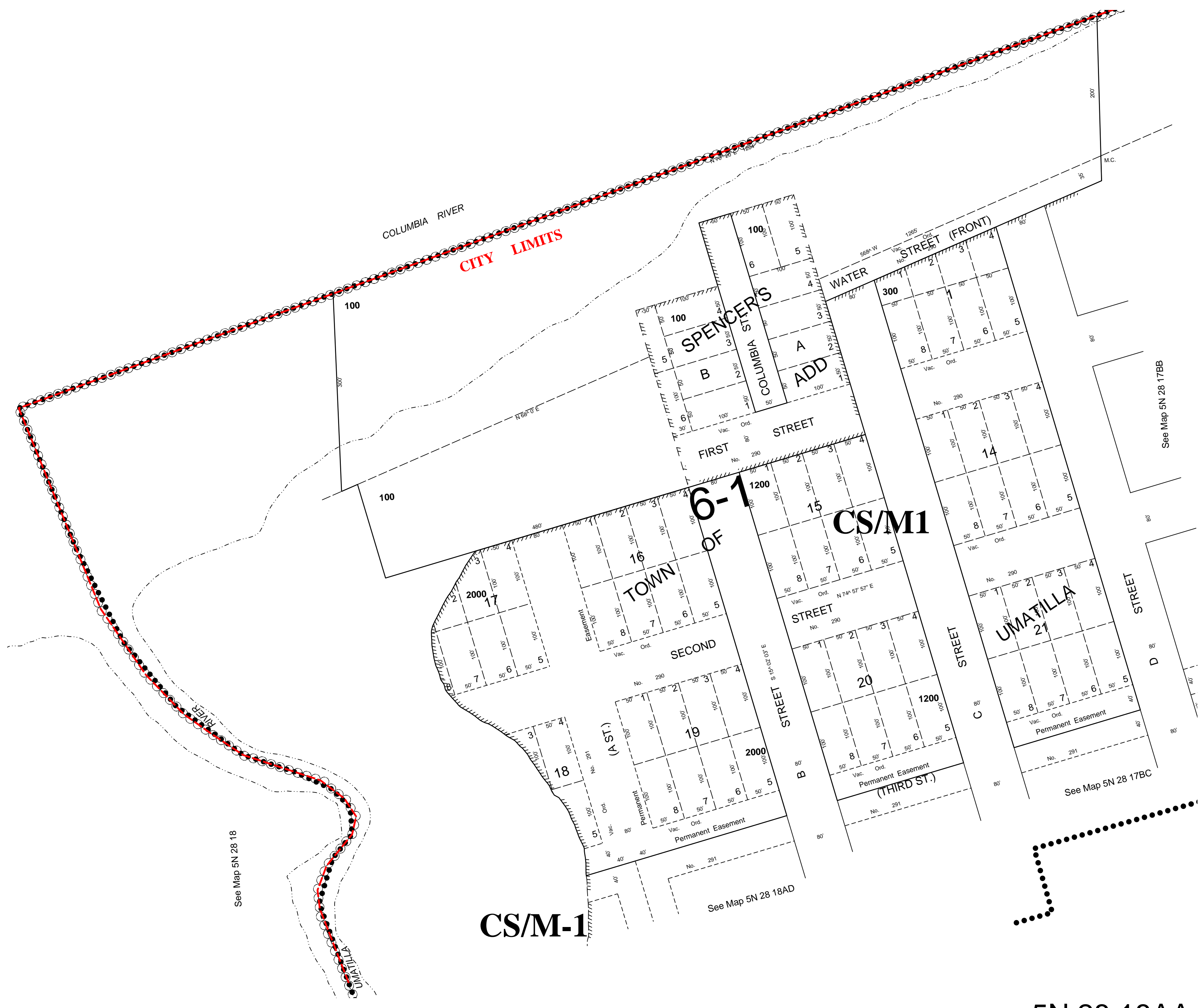
9/25/06

5N 28 18AA
AERIAL PHOTO NO. NZ 1P-57

City of Umatilla

SCALE 1"=100'

See FIRM for areas subject to flooding



See Map 5N 28 18

See Map 5N 28 17BB

See Map 5N 28 17BC

See Map 5N 28 18AD

CS/M-1

5N 28 18AA