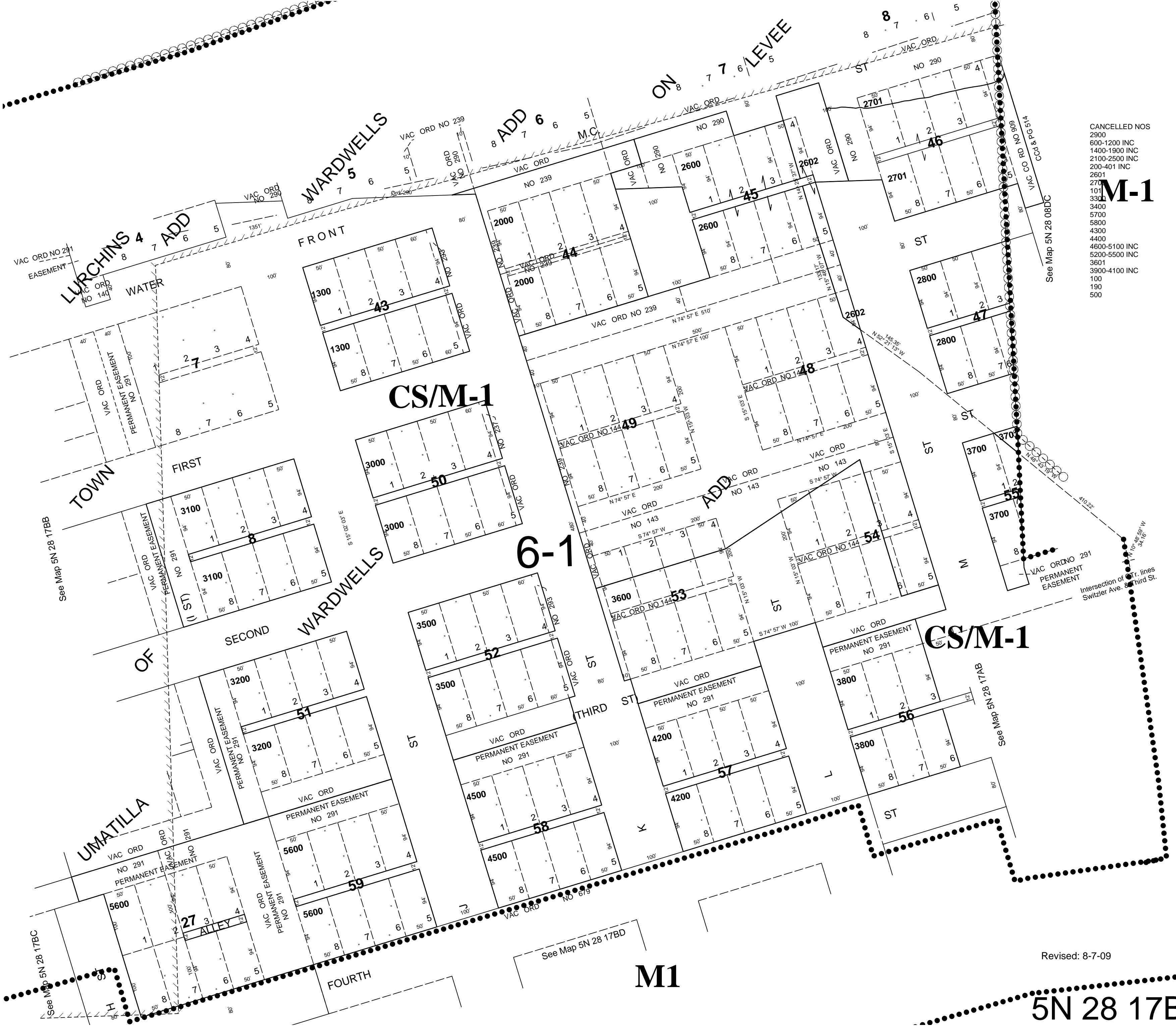


This map was prepared for Assessment & Taxation purposes only and was NOT prepared nor is it suitable for legal, engineering or surveying purposes.

NE1/4 NW1/4 SEC 17, T5N R28E WM UMATILLA COUNTY

SCALE 1"=100'

5N 28 17BA
Aerial Photo No. NZ-IP-57
CITY OF UMATILLA



- CANCELLED NOS
2900
600-1200 INC
1400-1900 INC
2100-2500 INC
290-401 INC
2901
270
101
330
3400
5700
5800
4300
4400
4600-5100 INC
5200-5500 INC
3601
3900-4100 INC
100
190
500

M-1

Revised: 8-7-09

5N 28 17BA