

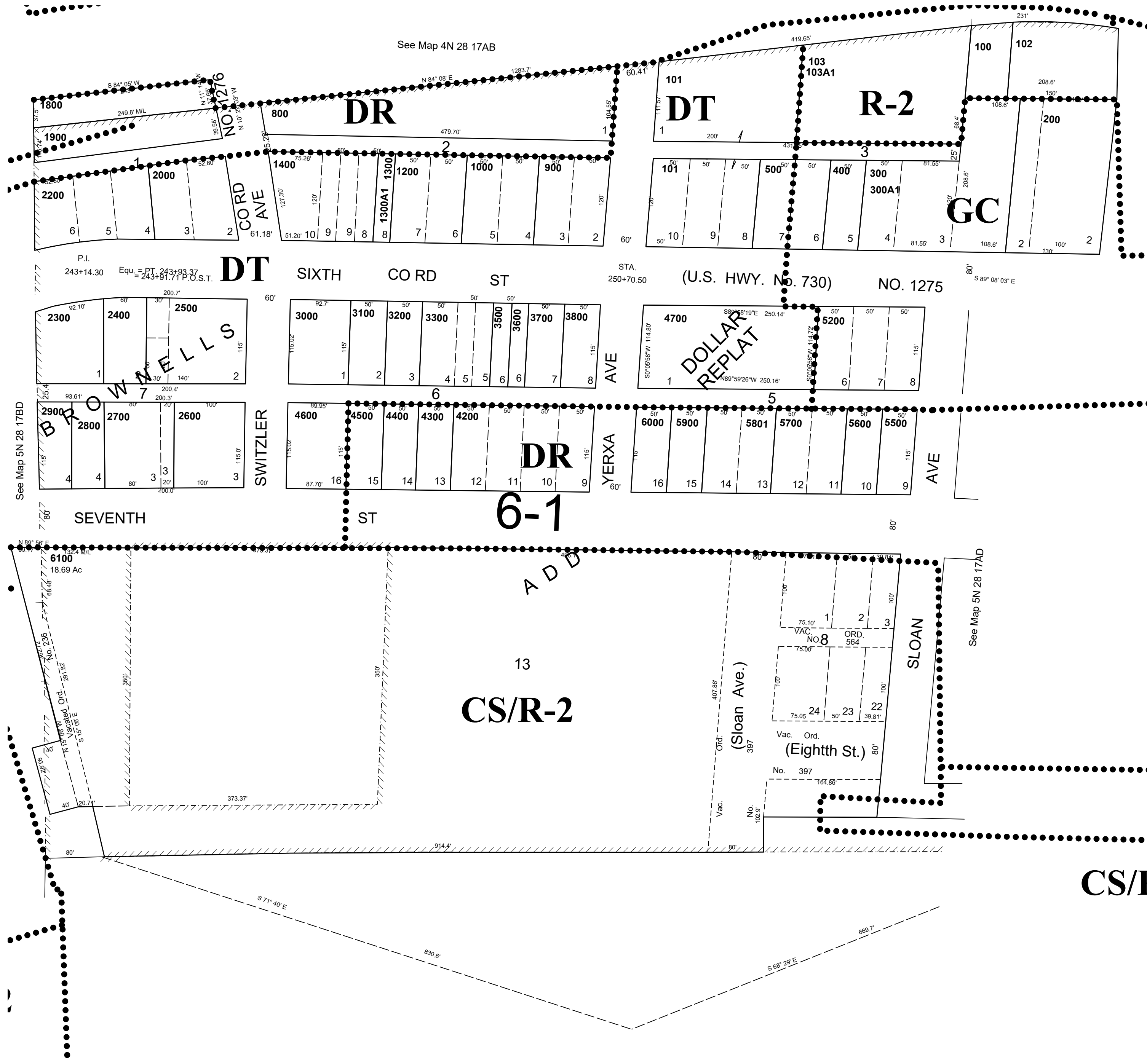
This map was prepared for assessment purposes

SW 1/4 NE 1/4 SEC 17 T5N R28E WM  
UMATILLA COUNTY

2/9/21

5N 28 17AC  
AERIAL PHOTO NO. NZ 1P-58  
City of Umatilla

SCALE 1"=100'



See Map 5N 28 17

5N 28 17AC