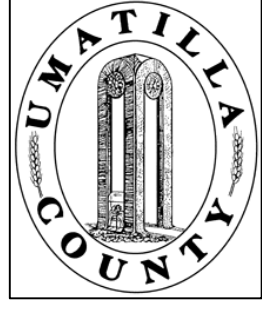


This map was prepared for Assessment purposes only.



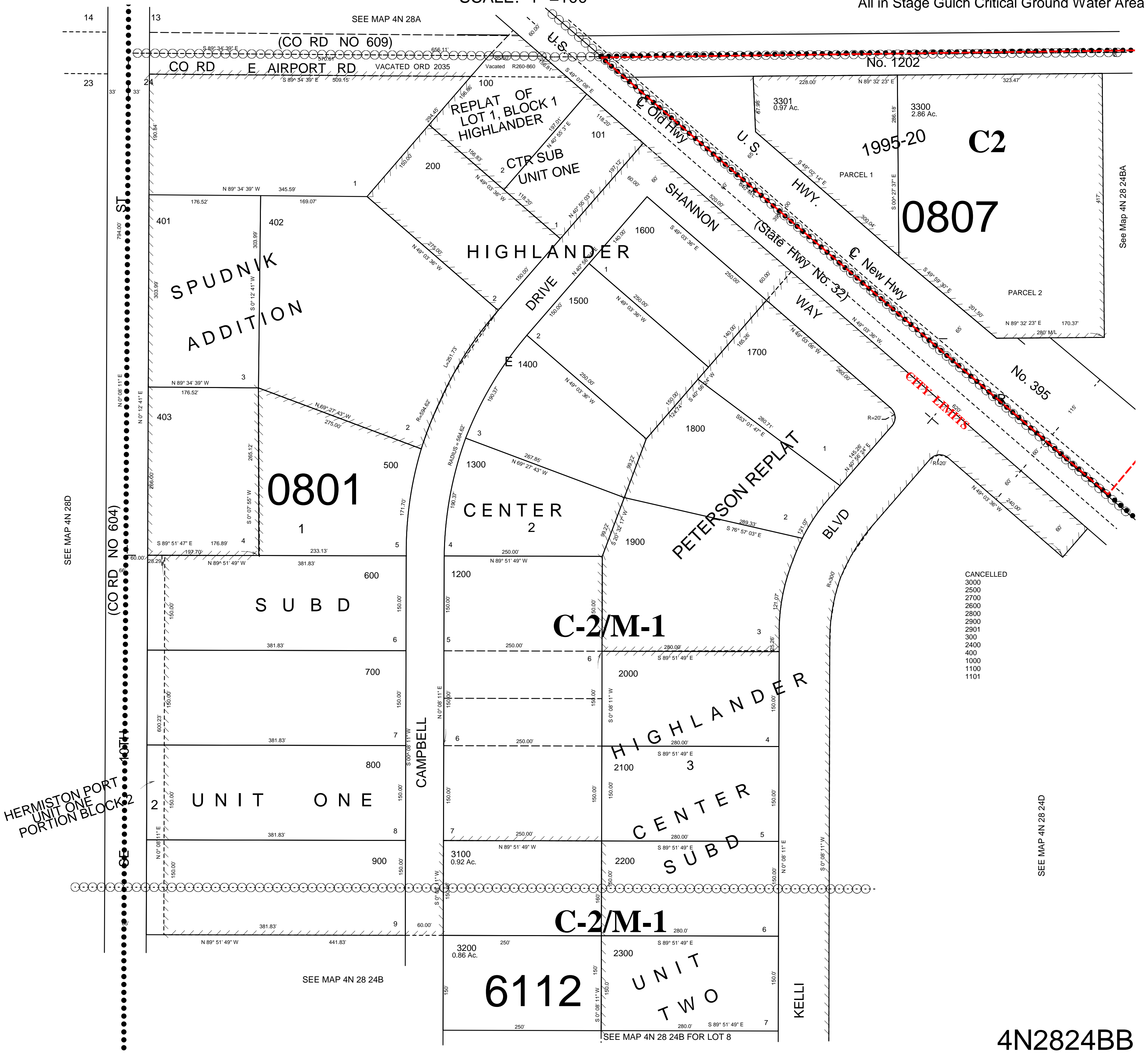
NW1/4 NW1/4 SEC 24 T 4N R28E WM UMATILLA COUNTY, OR

7/30/03

4N2824BB

SCALE: 1" = 100'

All in Hermiston Airport Hazard Overlay Zone
All in Stage Gulch Critical Ground Water Area



4N2824BB