

This map was prepared for assessment purposes

SCALE 1" = 200'

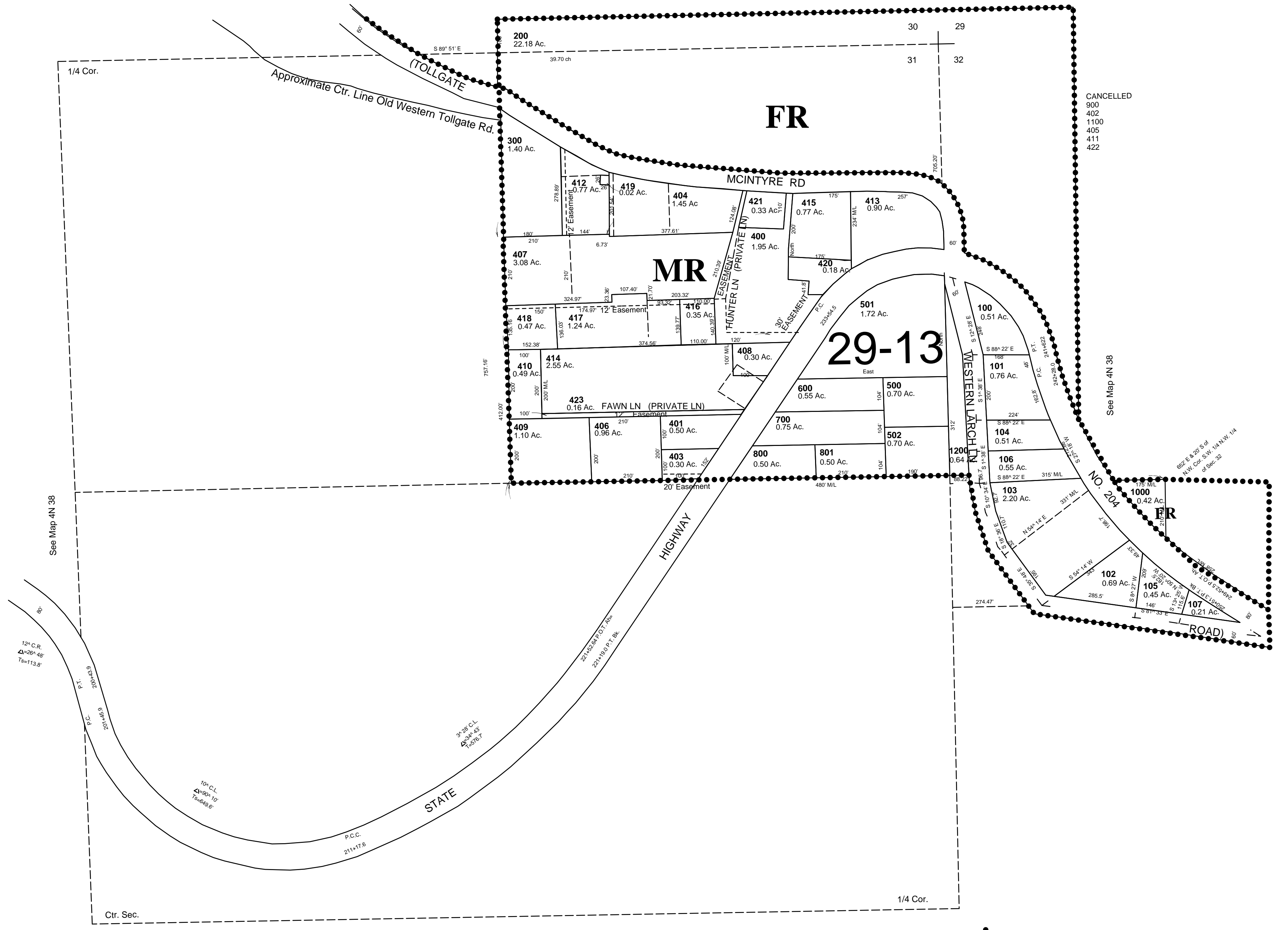
NE 1/4 SEC 31 T4N R38E WM UMATILLA COUNTY

1/21/05

4N 38 31A

AERIAL PHOTO NO. 9P-32

See Map 4N 38



See Map 4N 38

See Map 4N 38

See Map 4N 38

4N 38 31A