

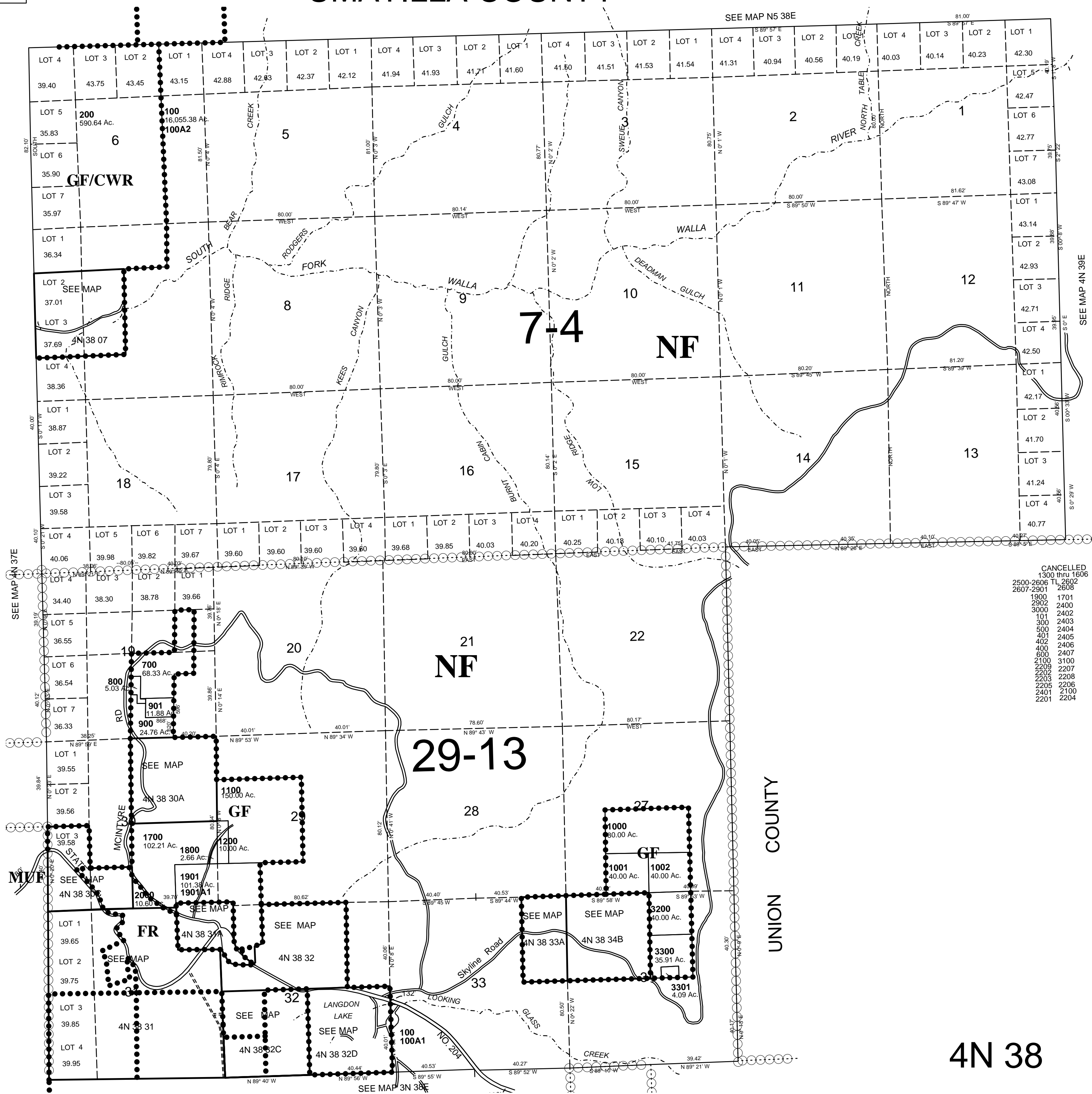
This map was prepared for assessment purposes

1"=2000'

T4N R38E WM UMATILLA COUNTY

3/18/05

4N 38



- CANCELLED
- 1300 thru 1506
 - 2500-2606 TL 2602
 - 2607-2901 2608
 - 1500 1701
 - 2902 2400
 - 3000 101
 - 300 2403
 - 500 2404
 - 401 2405
 - 402 2406
 - 400 2407
 - 2100 3100
 - 2200 2207
 - 2205 2208
 - 2206 2206
 - 2401 2100
 - 2201 2204

4N 38