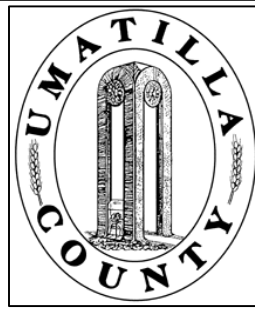


This map was prepared for Assessment purposes only.



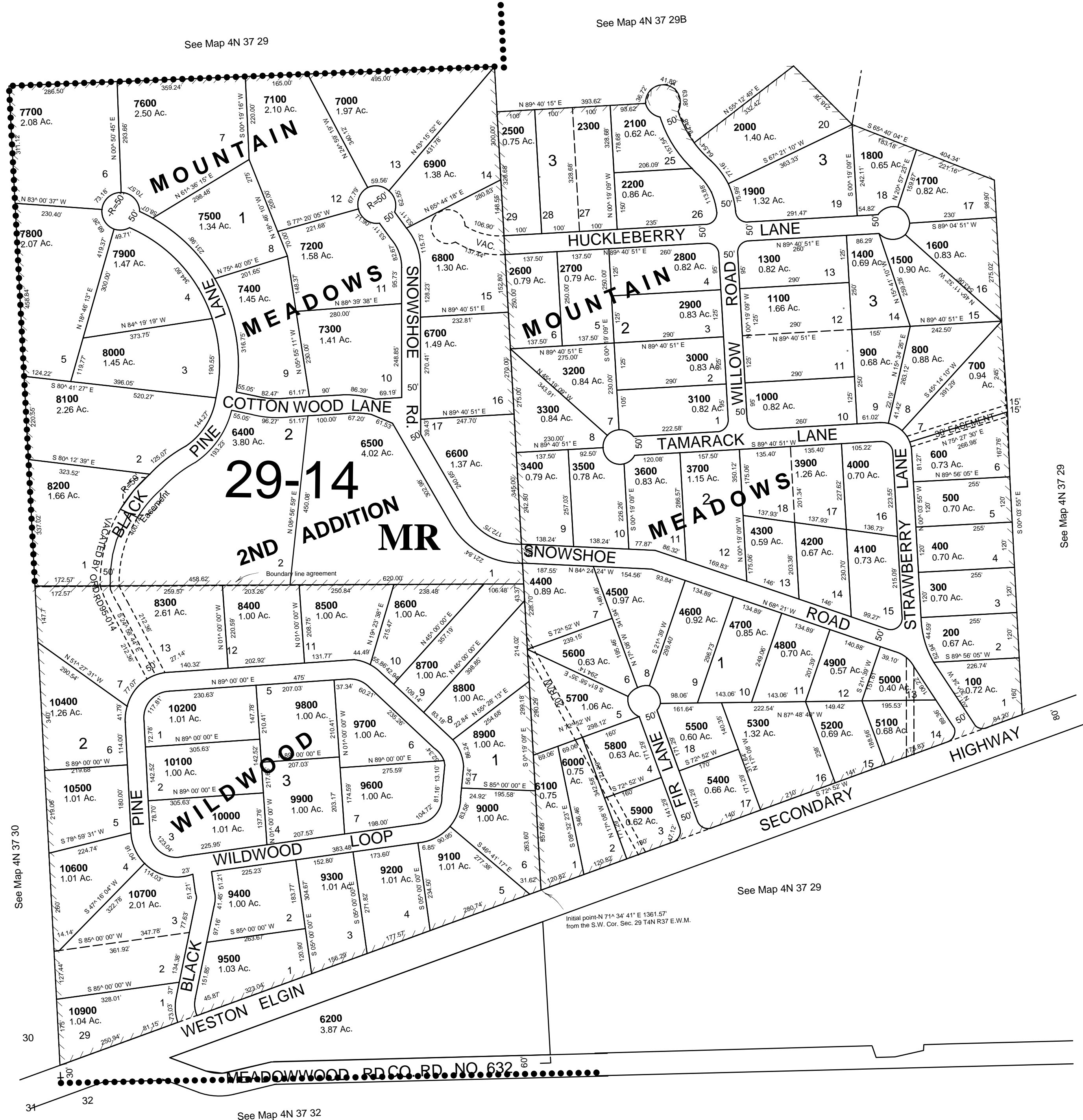
SW 1/4 SEC 29 T 4N R 37E WM UMATILLA COUNTY, OR

10/30/03

4N 37 29C

AERIAL PHOTO NO. 9P-39

SCALE: 1" = 200'



CANCELLED
6300
1200
2400
10300
3800
10800

See Map 4N 37 29

See Map 4N 37 29

See Map 4N 37 32

4N 37 29C