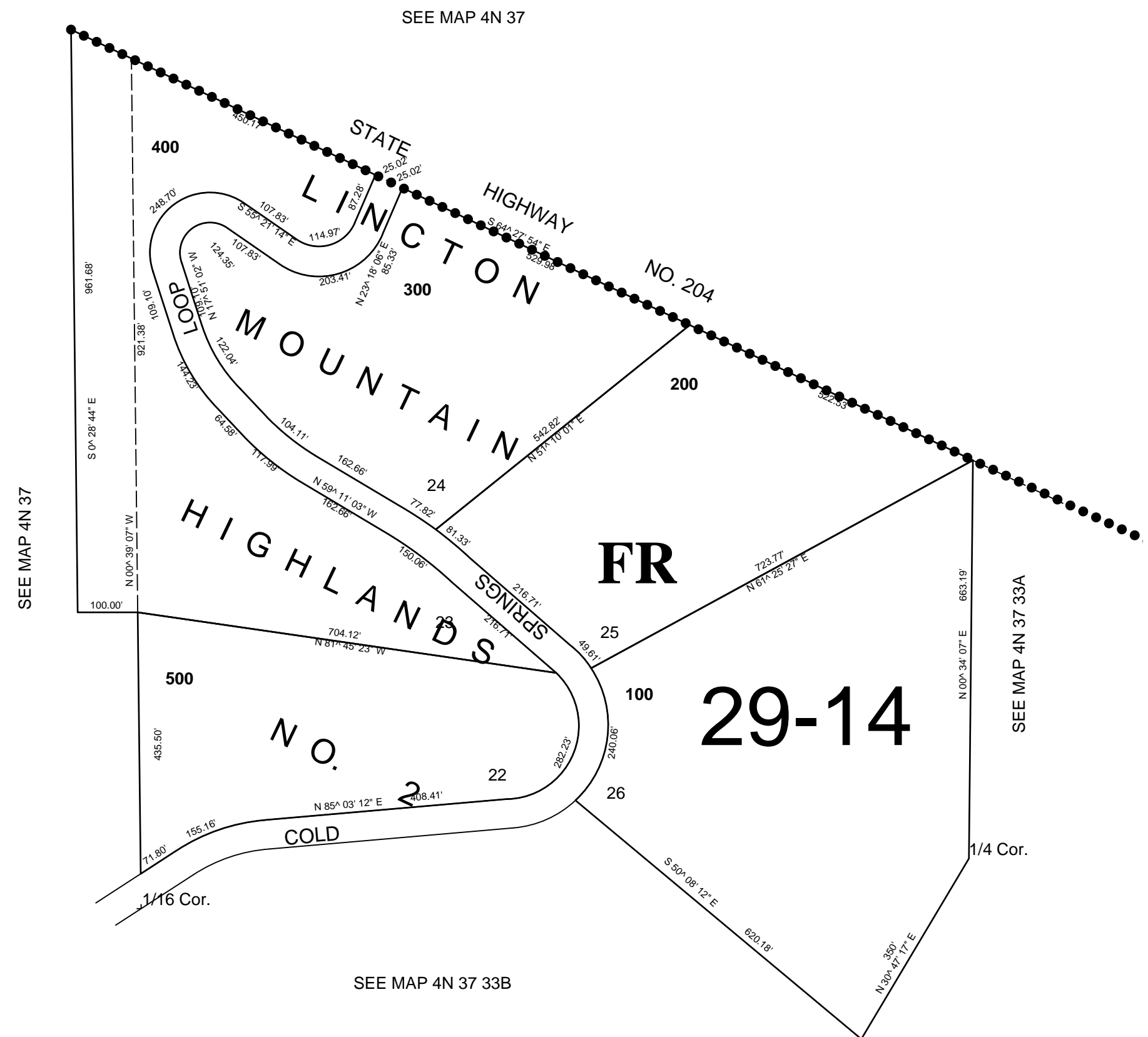


This map was prepared for Assessment & Taxation purposes only and has not been prepared for legal, engineering or surveying purposes.

SW1/4 SEC 28 T4N R37E WM
UMATILLA COUNTY
SCALE 1"=200'

9/19/06

4N 37 28C
AERIAL PHOTO NO. 9P 37-38



4N 37 28C