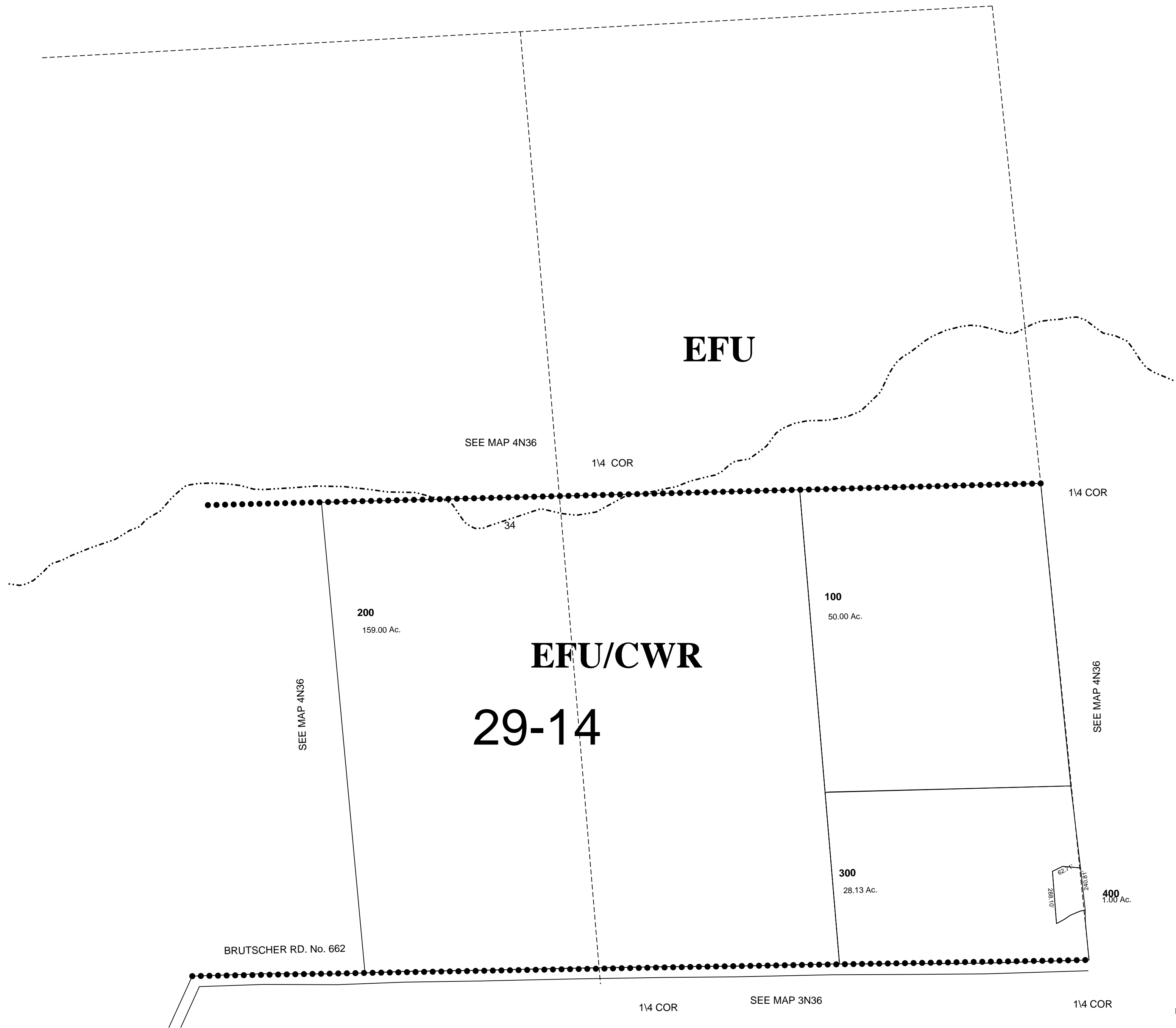


This map was prepared for Assessment & Taxation purposes only and was Not prepared, nor is it suitable for legal, engineering or surveying purposes.

Sec 34 T4 N R 36 E WM  
UMATILLA COUNTY  
SCALE 1"=400'

4N3634  
AERIAL PHOTO NO 5P 68-70&  
90-94



REVISED 5-12-09

4N3634