

This map was prepared for Assessment & Taxation purposes only and was NOT prepared nor is it suitable for legal, engineering or surveying purposes.

SE1/4 NW1/4 SEC 22 T4N R35E WM

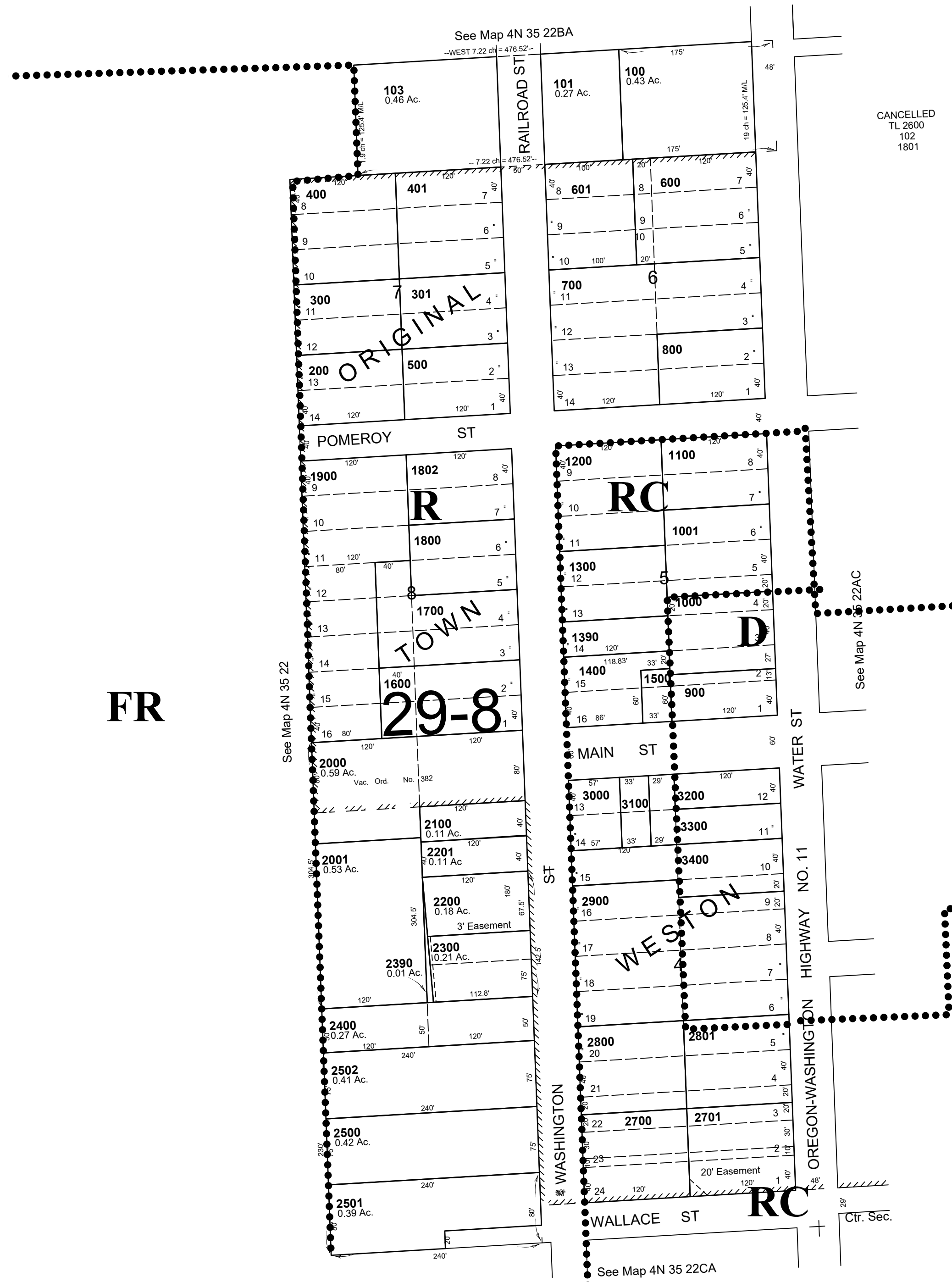
UMATILLA COUNTY

SCALE 1"=100'

4N 35 22BD

AERIAL PHOTO NO. 5P-97

See FEMA FIRM for areas subject to flood



REVISED: 8/25/21

4N 35 22BD