

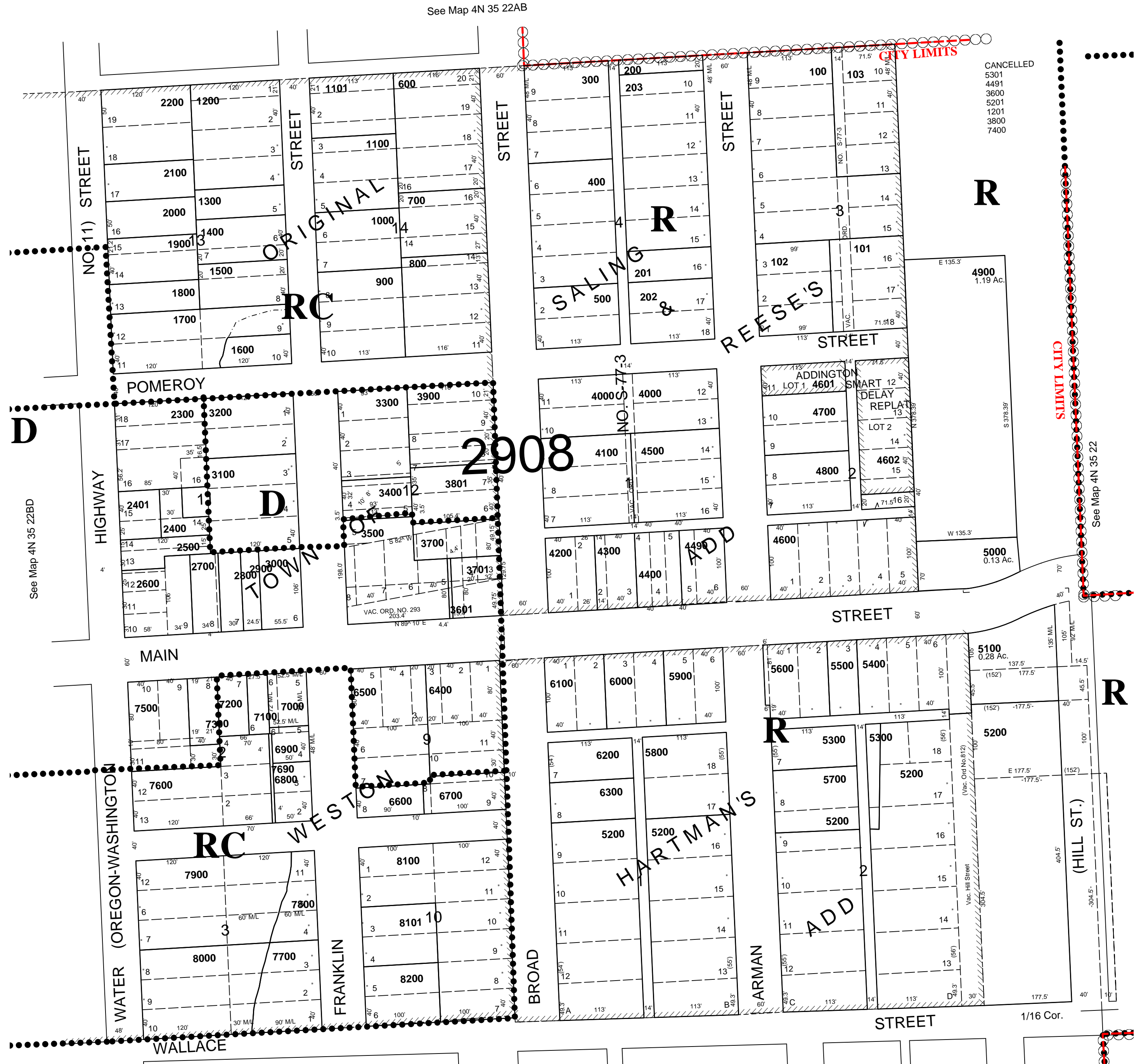
This map was prepared for Assessment & Taxation purposes only and was NOT prepared nor is it suitable for legal, engineering or surveying purposes.

SW 1/4 NE 1/4 SEC 22 T4N R35E WM UMATILLA COUNTY

4N 35 22AC
AERIAL PHOTO NO. 5P-97
CITY OF WESTON

SCALE 1"=100'

See FEMA FIRM for areas subject to flood



4N 35 22AC
Revised: 3/28/12