

This map has been prepared for Assessment & Taxation purposes only and has NOT been prepared for legal, engineering or surveying purposes

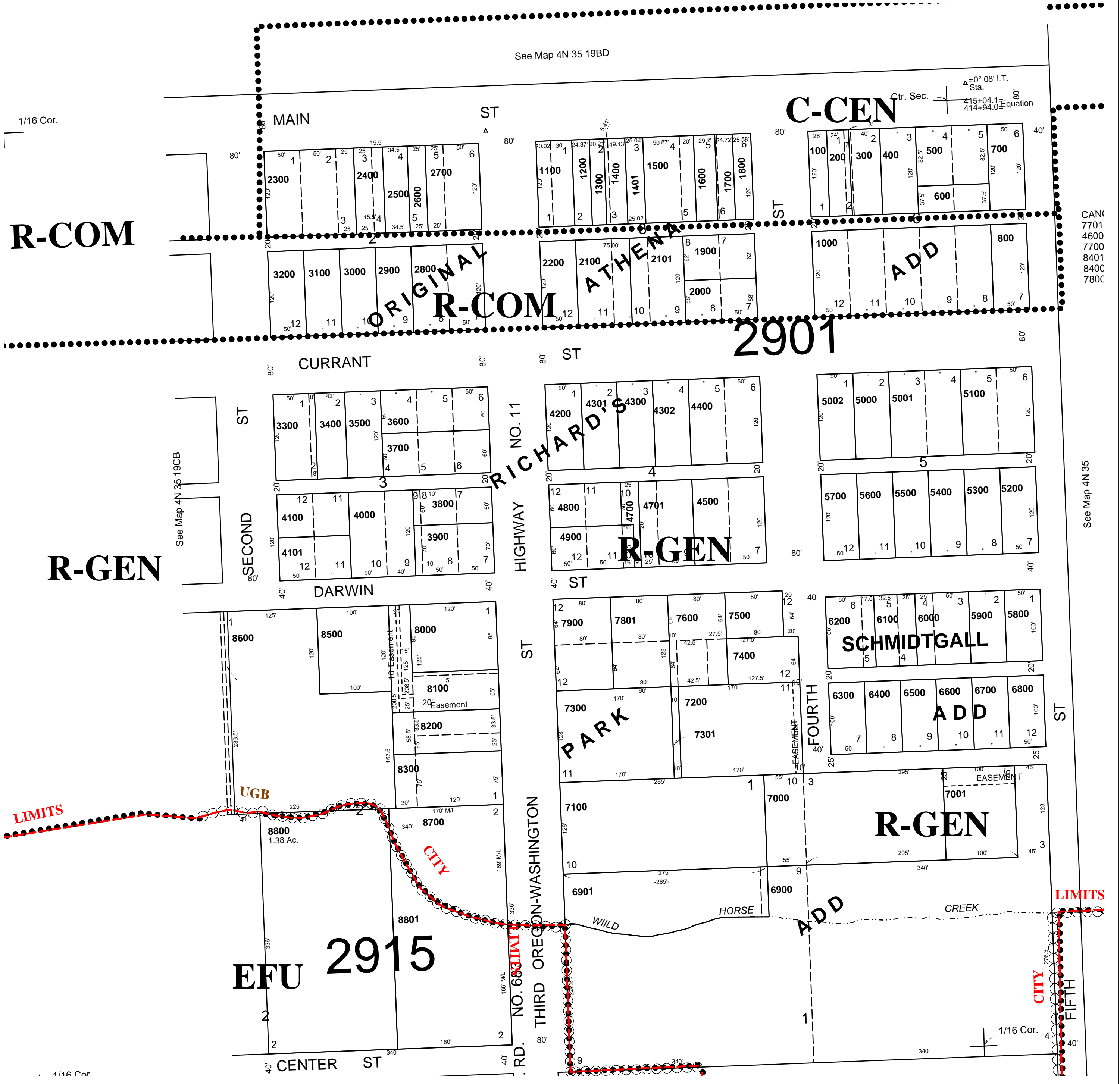
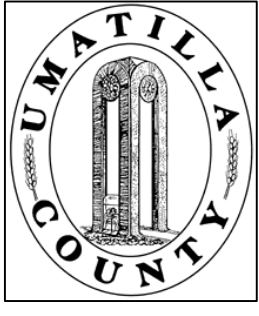
NE1/4 SW1/4 SEC 19 T 4N R 35E WM UMATILLA COUNTY, OR

12/04/07

4N3519CA
AERIAL PHOTO NO. 5P-100

SCALE: 1" = 100'

See FEMA FIRM for areas subject to flood



4N3519CA