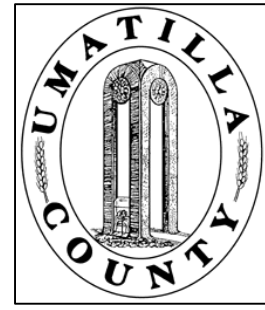


This map is prepared for Assessment & Taxation purposes only and is NOT prepared for legal, engineering or surveying purposes.



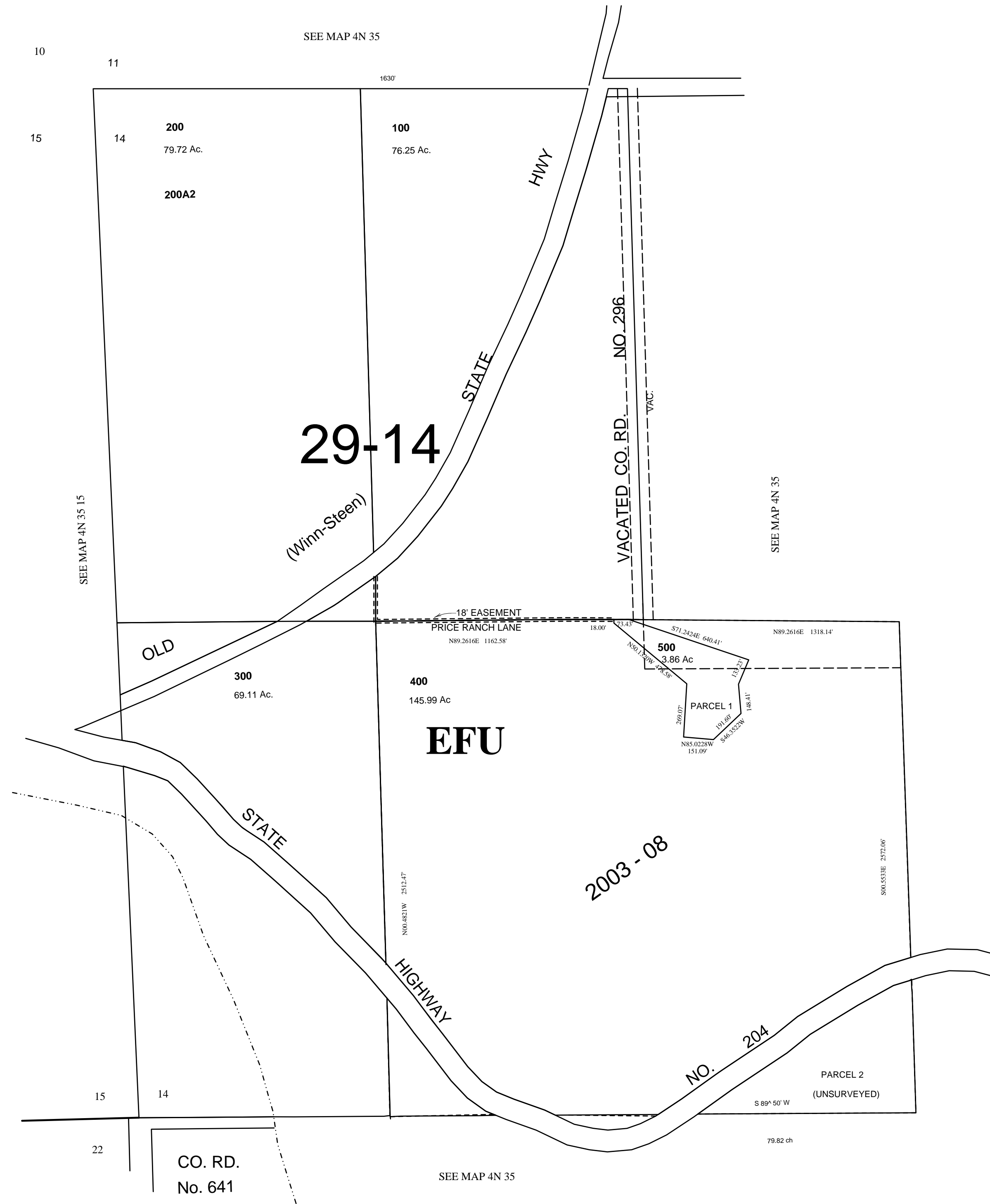
SEC 14 T4N R35E WM
UMATILLA COUNTY, OR

5/20/03

4N3514

AERIAL PHOTO NO 5P 61-65 &
5P 95-99 & 138-142

SCALE: 1" = 400'



4N3514