

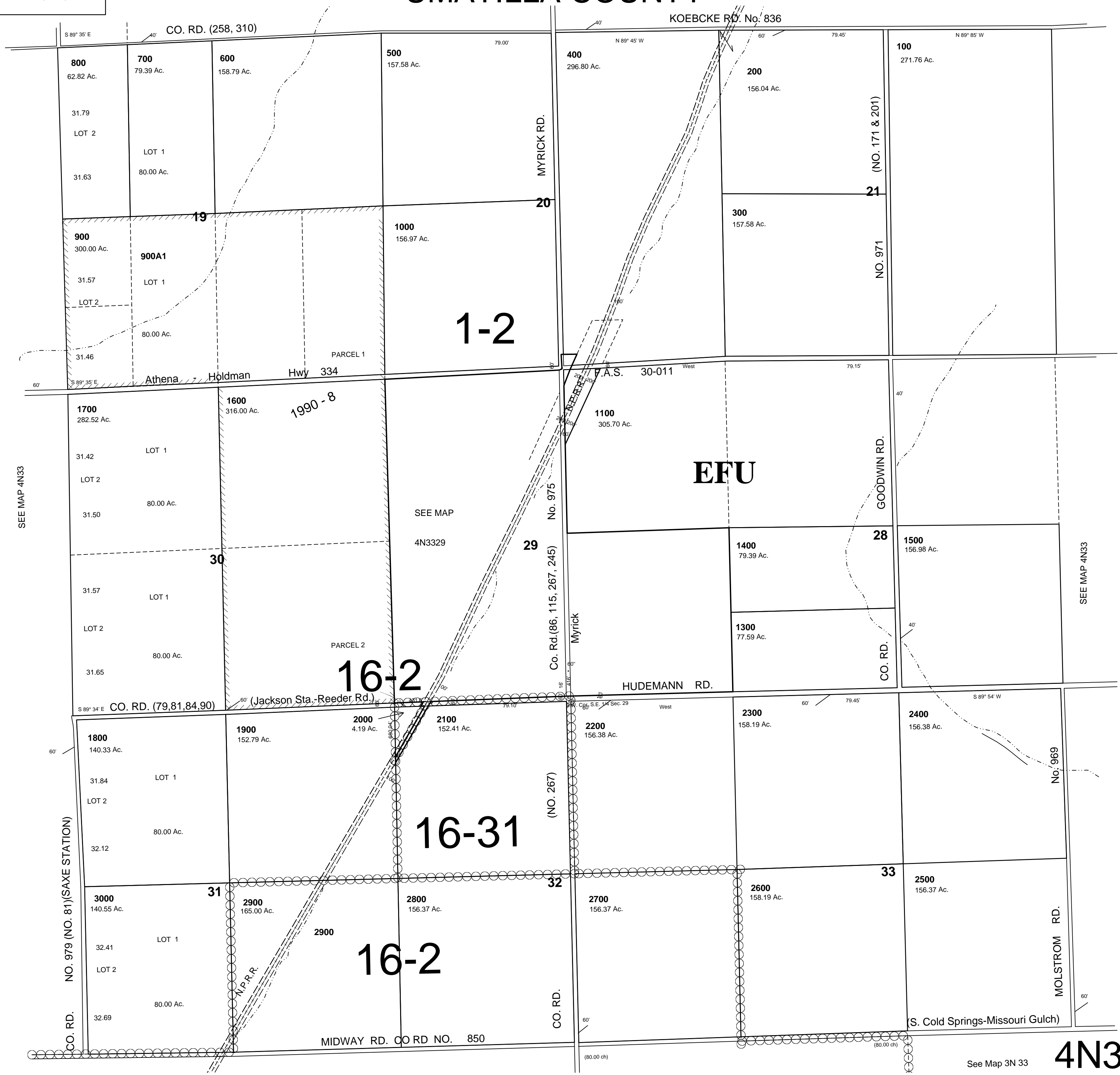
This map was prepared for assessment purposes

# SW 1/4 T4N R33 E WM UMATILLA COUNTY

11-13-06

## 4N33C

SCALE 1"=1000'



SEE MAP 4N33

SEE MAP 4N33

CO. RD. NO. 81 (SAXE STATION)

See Map 3N 33

## 4N33C