

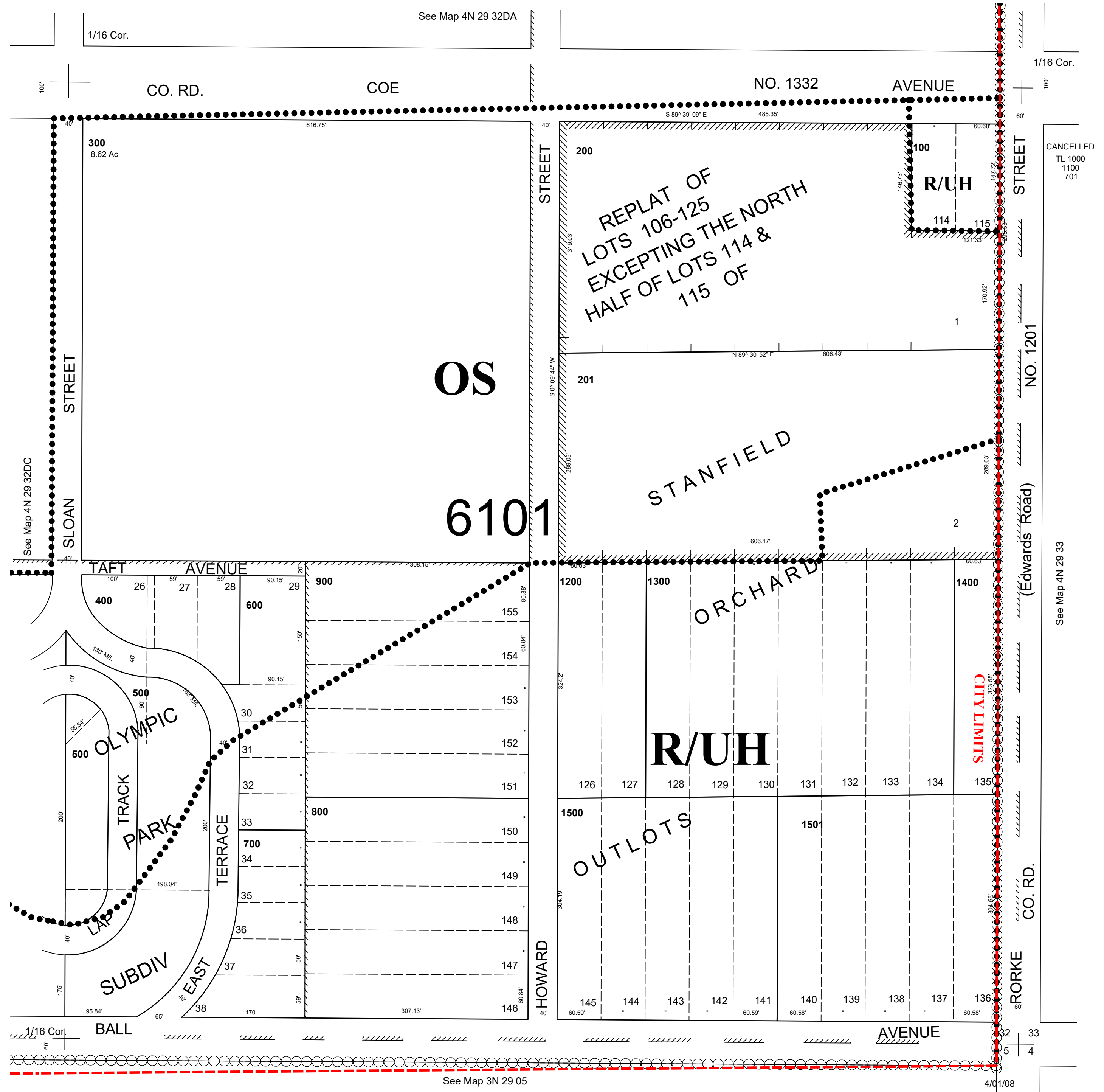
This map was prepared for Assessment & Taxation purposes only and was NOT prepared nor is it suitable for legal, engineering or surveying purposes.

SE1/4 SE1/4 SEC 32 T4N R29E WM UMATILLA COUNTY

SCALE 1"=100'

4N 29 32DD
AERIAL PHOTO NO. NZ 2P-44
CITY OF STANFIELD

See FEMA FIRM for areas subject to flooding



4N 29 32DD