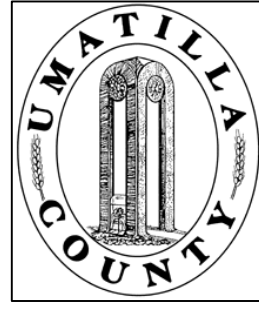


This map was prepared for Assessment purposes only.



# NE1/4 SEC 21 T4N R28E WM UMATILLA COUNTY, OR

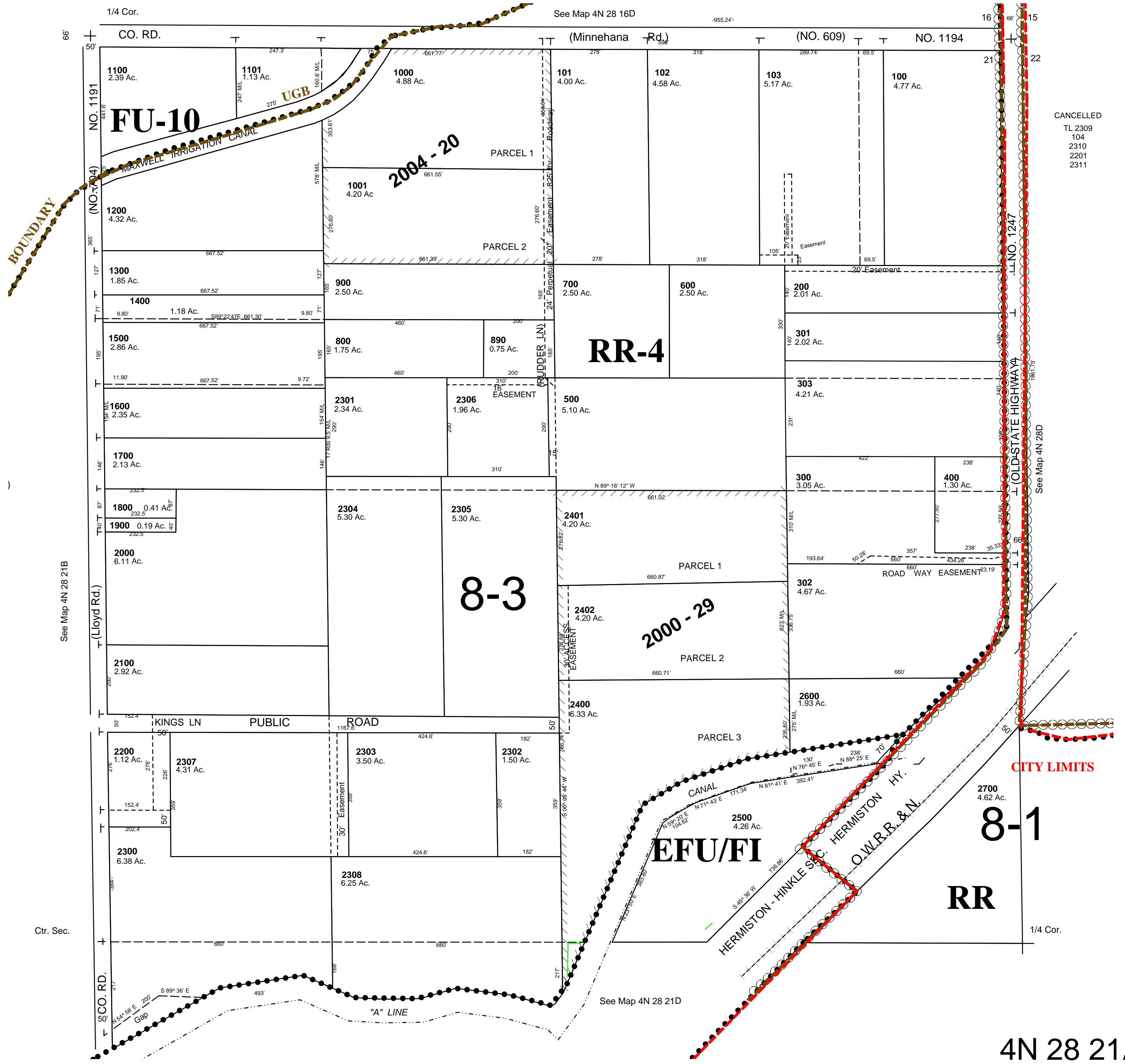
SCALE: 1" = 200

4/29/05

## 4N 28 21A

Hermiston City & Urban Growth Area

All in Hermiston Airport Hazard Overlay Zone  
All in Butter Creek Critical Ground Water Area



CANCELLED  
TL 2309  
104  
2310  
2201  
2311

## 4N 28 21A