

This map was prepared for assessment purposes

NE1/4 SEC 19 T4N R28E WM

03/19/2020

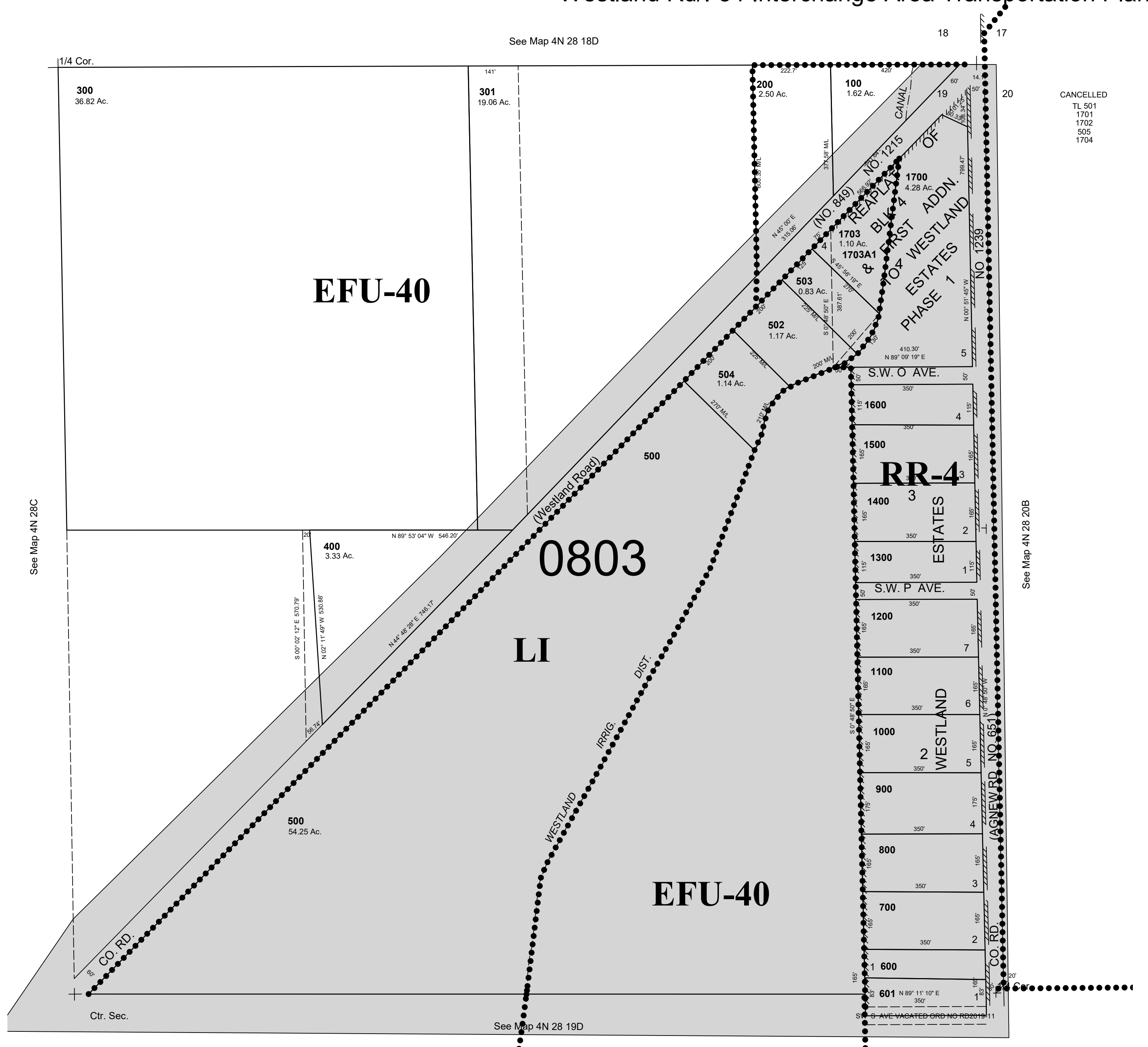
4N 28 19A

AERIAL PHOTO NO. 2P-26

UMATILLA COUNTY

SCALE 1"=200'

All in Butter Creek/Ordance Gravel Critical Ground Water Area  
Westland Rd/I-84 Interchange Area Transportation Plan



CANCELLED  
TL 501  
1701  
1702  
505  
1704

4N 28 19A