

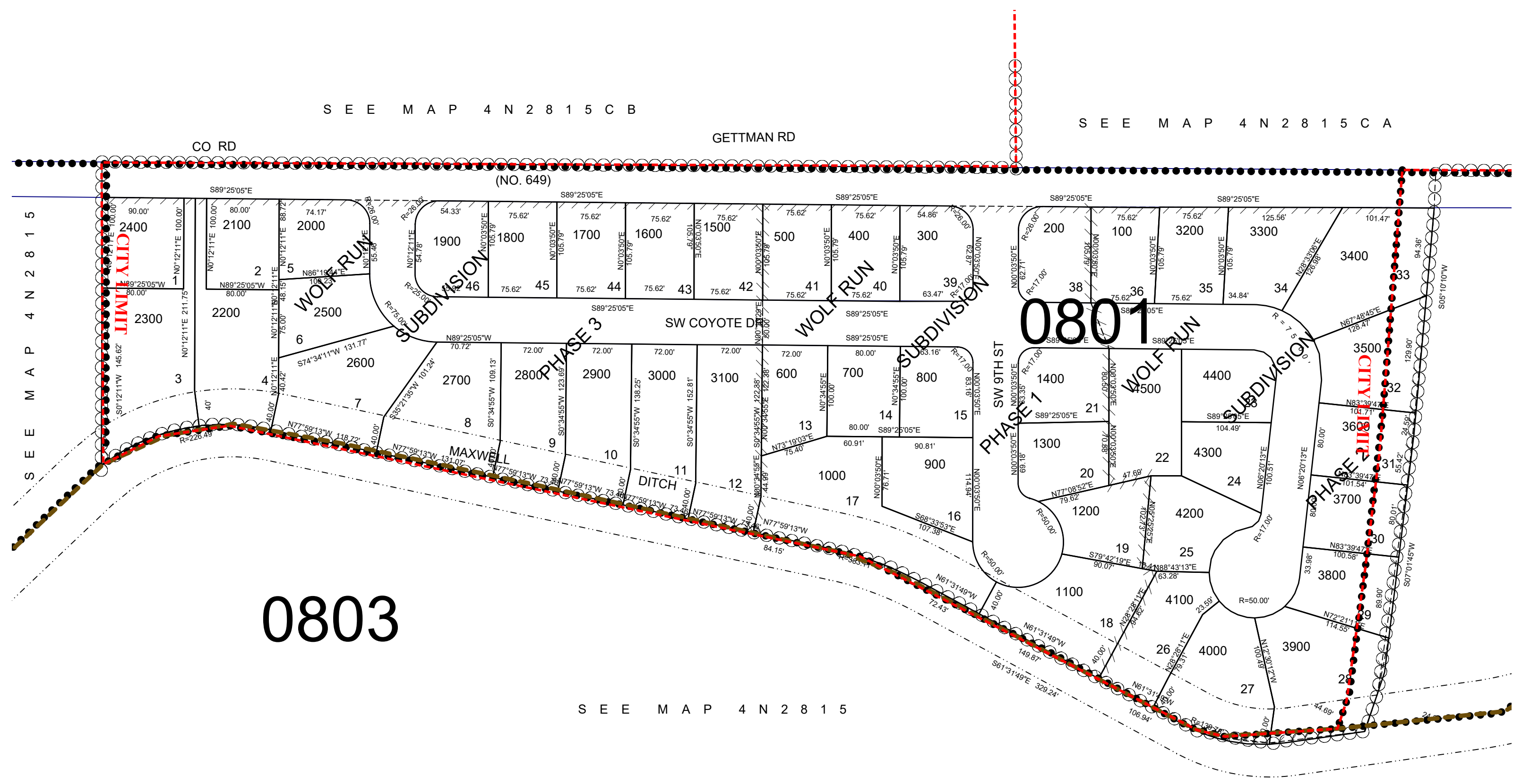
This map was prepared for Assessment & Taxation purposes only and has not been prepared or is it suitable for legal, engineering or surveying purposes,

06/03/2019

SW1/4 SW 1/4 T4N R28 E WM UMATILLA COUNTY SCALE 1"=100'

4N2815CC

HERMISTON CITY & UGA
All in Airport Hazard Overlay Zone
All in Critical Ground Water Areas



0803

0801

SEE MAP 4 N 2 8 1 5

4N2815CC