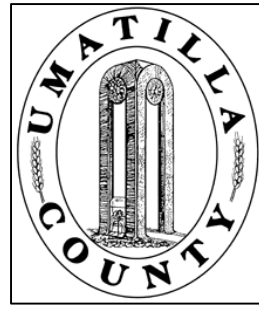


This map was prepared for Assessment purposes only.



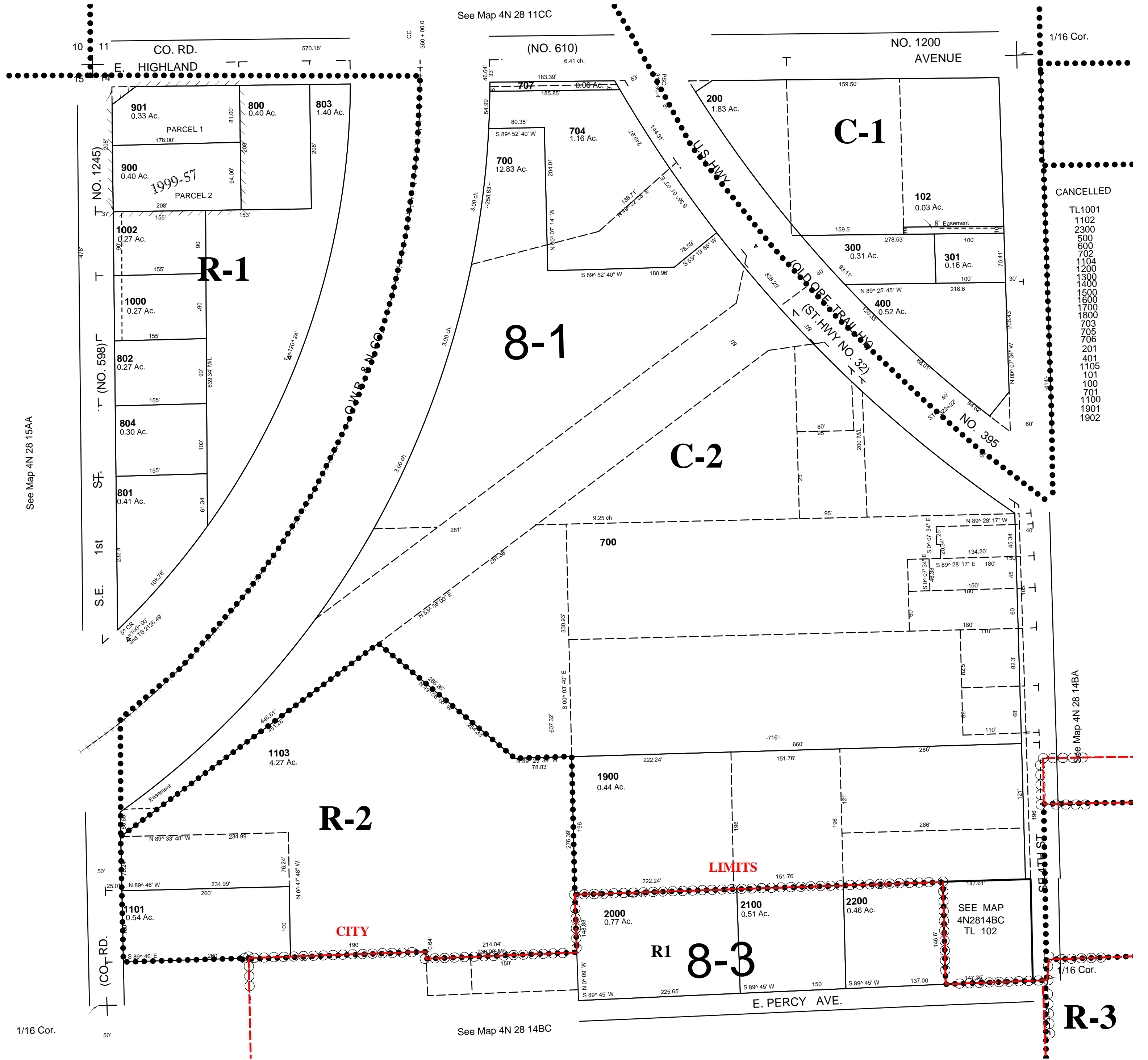
NW1/4 NW1/4 SEC 14 T4N R28E WM

UMATILLA COUNTY, OR

SCALE: 1" = 100'

4N2814BB

Hermiston City & Urban Growth Area
All in Stage Gulch Critical Ground Water Area
All in Airport Hazard Overlay Zone



4N2814BB