

This map was prepared for Assessment & Taxation purposes only and was NOT prepared nor is it suitable for legal, engineering or surveying purposes.

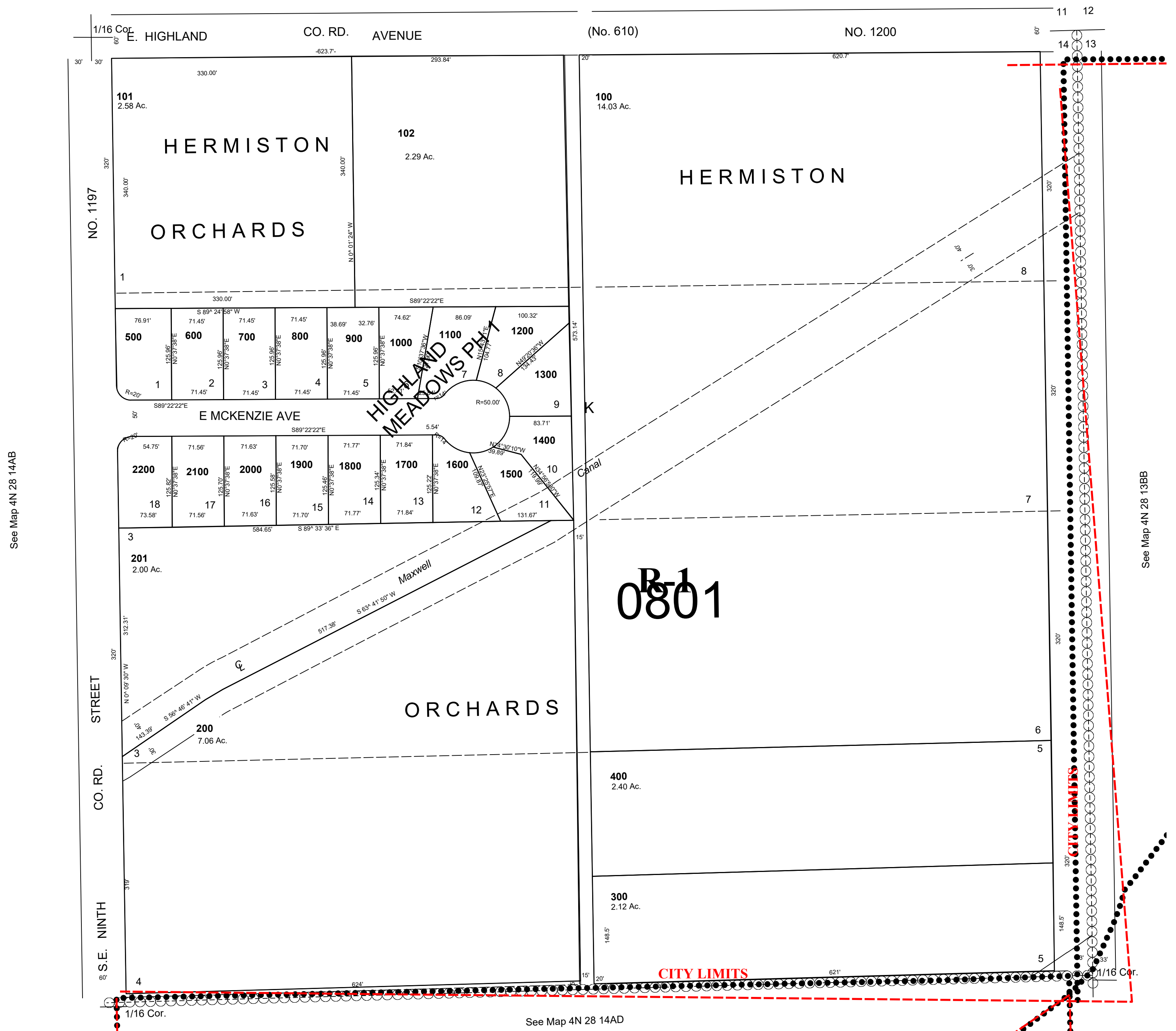
NE1/4 NE1/4 SEC 14 T4N R28E WM UMATILLA COUNTY

SCALE 1"=100'

4N 28 14AA
AERIAL PHOTO NO. 1P-123

CITY OF HERMISTON

See Map 4N 28 11DD



See Map 4N 28 14AB

See Map 4N 28 13BB

See Map 4N 28 14AD

REVISED: 7-06-21

4N 28 14AA