

This map was prepared for assessment purposes

SE1/4 SEC 12 T4N R28E WM UMATILLA COUNTY

SCALE 1"=200'

11/06/2019

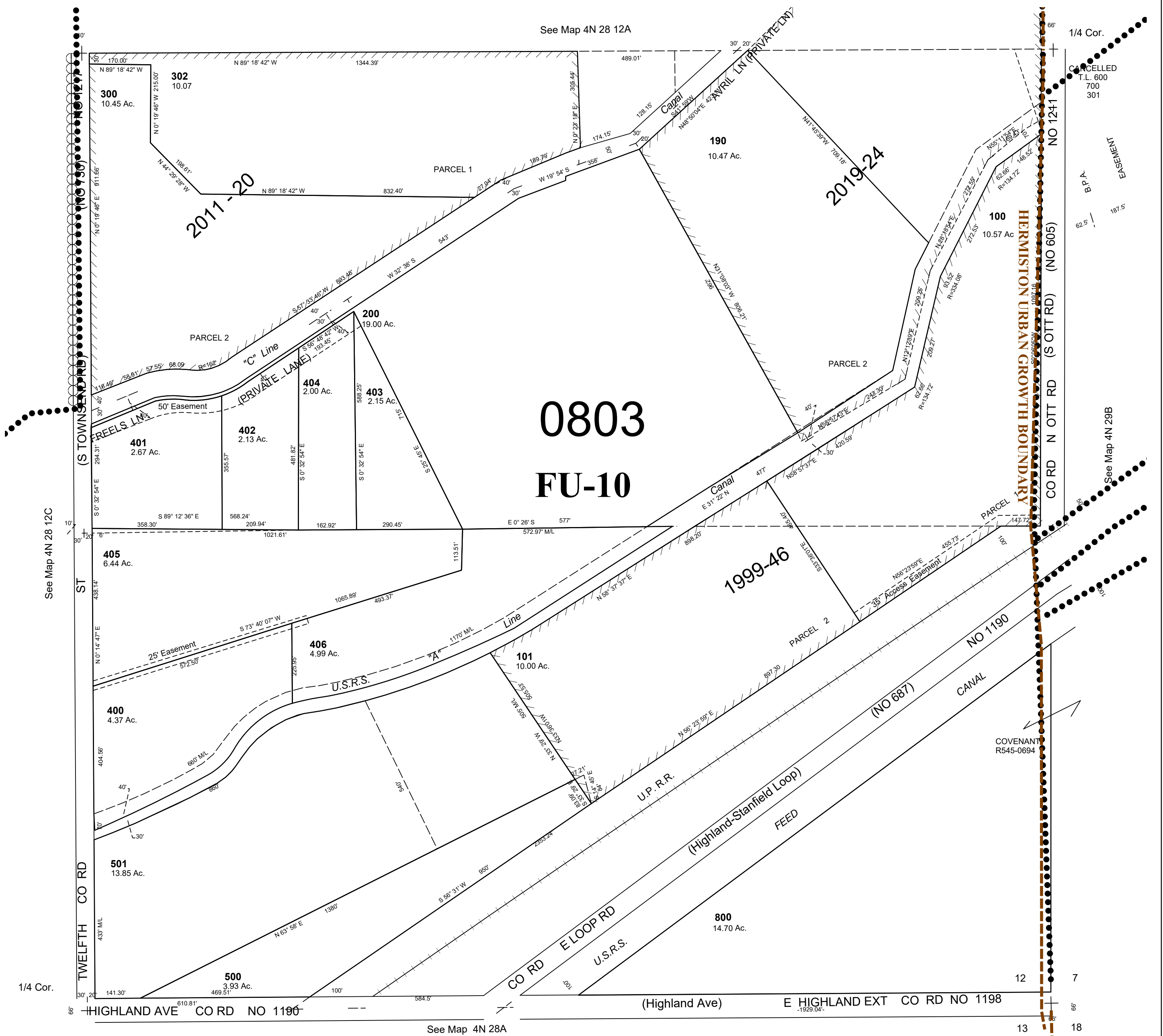
4N 28 12D

AERIAL PHOTO NO. 1P-123

HERMISTON URBAN GROWTH AREA

All in Hermiston Airport Hazard Area

All in Stage Gulch Critical Ground Water Area



4N 28 12D