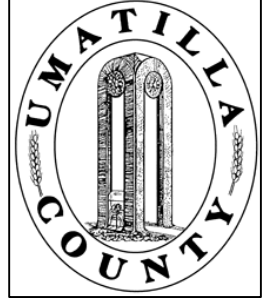


This map was prepared for Assessment and Taxation purposes only and has NOT been prepared for legal, engineering or surveying purposes.



NW1/4 SW1/4 SEC 12 T4N R28E WM

5/29/03

4N2812CB

UMATILLA COUNTY, OR

SCALE: 1" = 100'

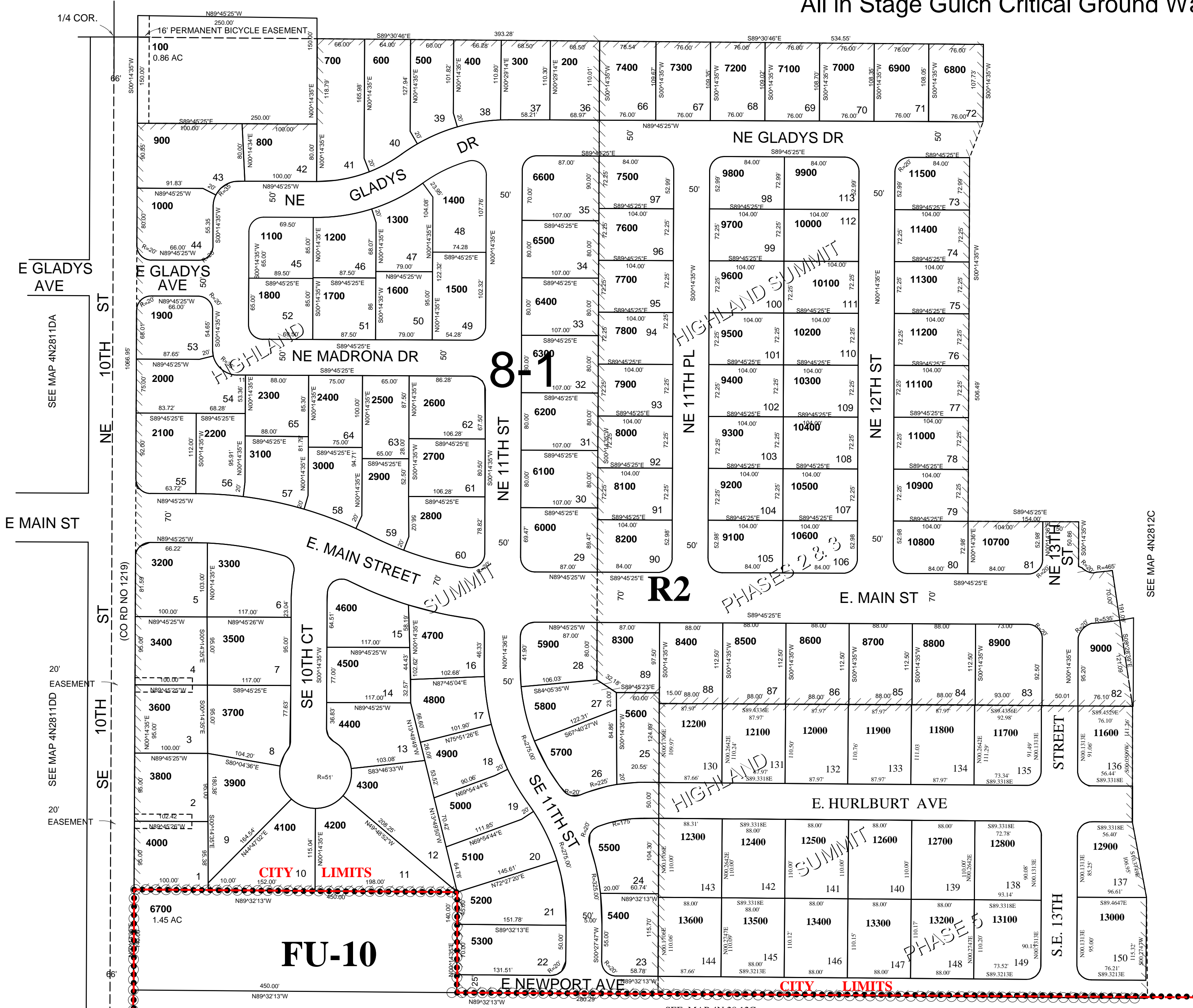
AERIAL PHOTO NO 1P-123

HIGHLAND SUMMIT
HIGHLAND SUMMIT PH 2&3
HIGHLAND SUMMIT PH 5

CITY OF HERMISTON

SEE MAP 4N2812B

All in Stage Gulch Critical Ground Water Area



8-3

4N2812CB