

This map was prepared for assessment purposes

# SW1/4 SE1/4 SEC 11 T4N R28E WM UMATILLA COUNTY

4/3/06

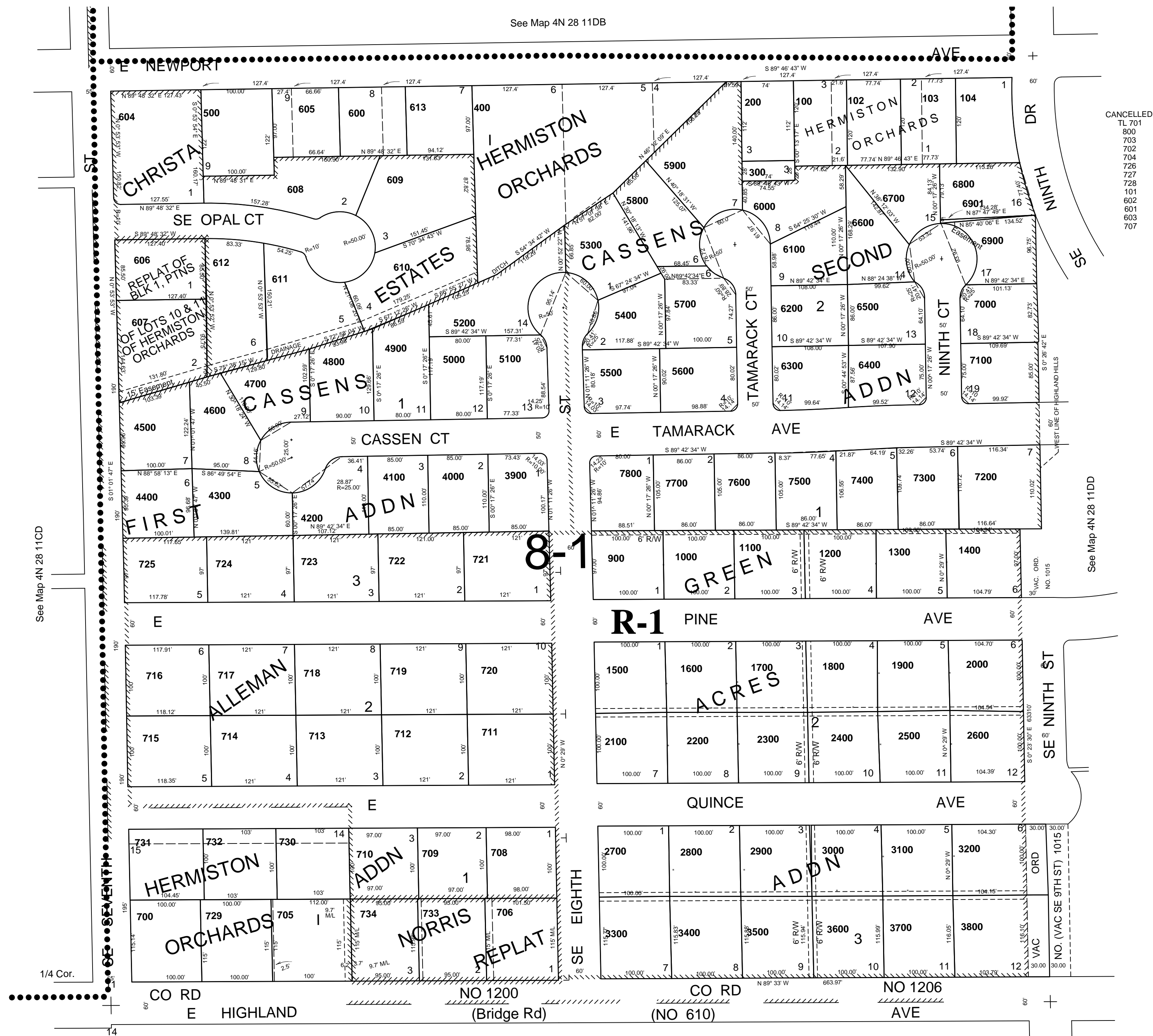
## 4N 28 11DC

AERIAL PHOTO NO. NZ 1P-123

### CITY OF HERMISTON

SCALE 1"=100'

See Map 4N 28 11DB



CANCELLED  
 TL 701  
 800  
 703  
 704  
 705  
 727  
 728  
 101  
 602  
 801  
 603  
 707

See Map 4N 28 11CD

See Map 4N 28 11DD

See Map 4N 28 14AB

## 4N 28 11DC