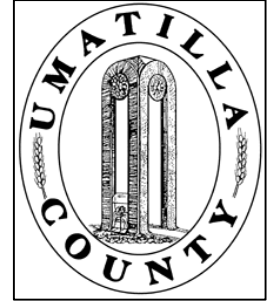


This map was prepared for Assessment & Taxation purposes only and was NOT prepared nor is it suitable for legal, engineering, or surveying purposes.



# NW1/4 SW1/4 SEC 11T4N R28E WM

## UMATILLA COUNTY, OR

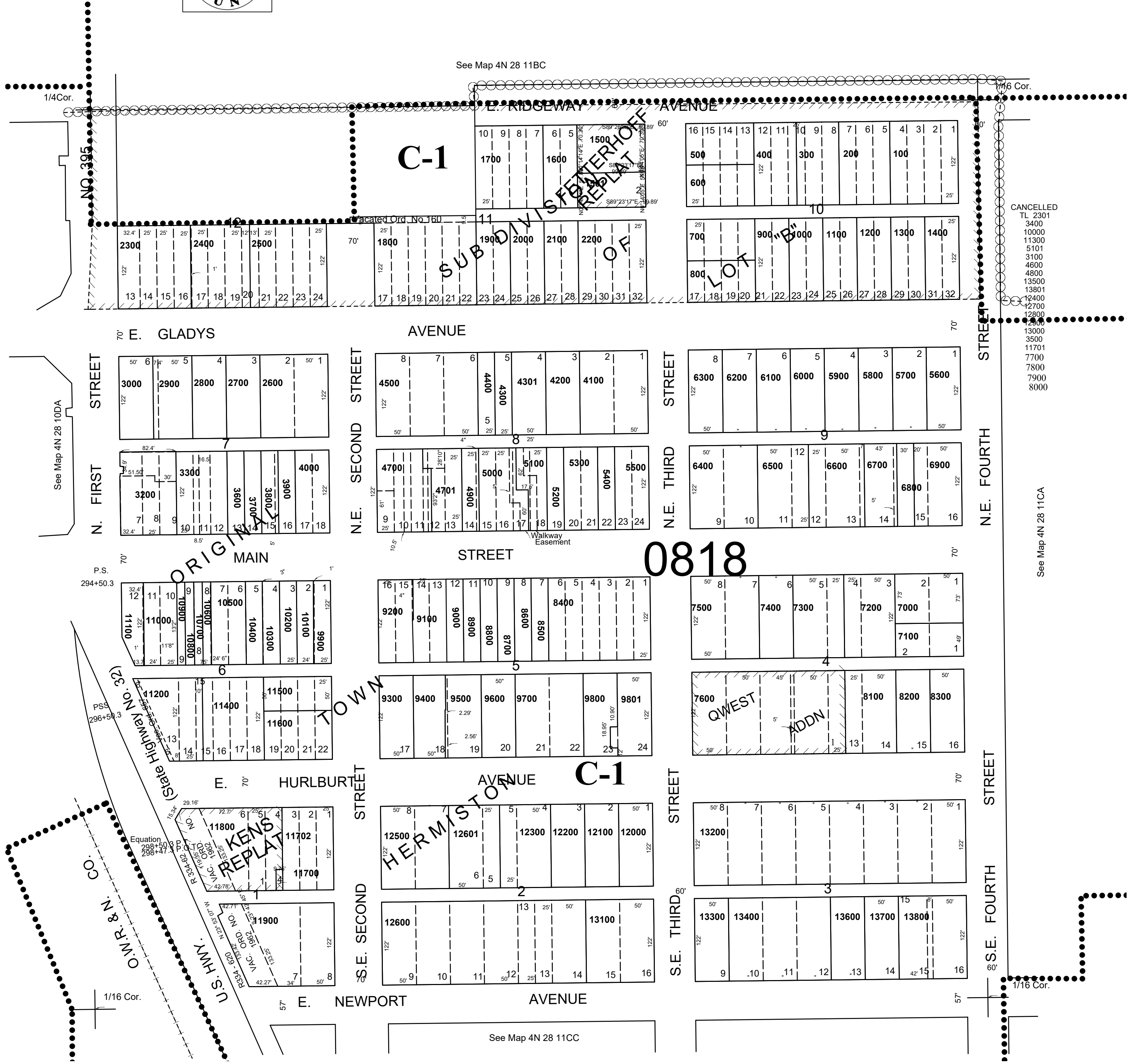
SCALE: 1" = 100'

Revised: 03-05-21

AERIAL PHOTO NO NZ 1P-123

CITY OF UMATILLA

# 4N2811CB



CANCELLED  
 TL 2301  
 3400  
 10000  
 11300  
 5101  
 3100  
 3100  
 4600  
 4600  
 13500  
 13801  
 12400  
 12700  
 12800  
 13000  
 3500  
 11701  
 7700  
 7800  
 7900  
 8000

See Map 4N 28 11CA

See Map 4N 28 11CC

# 4N2811CB

# 0818

ORIGINAL TOWN  
 HERMISTON  
 KEN'S REPLAT

See Map 4N 28 11BC  
 C-1  
 SUBDIVISION REPLAT

See Map 4N 28 10DA

P.S. 294+50.3

P.S. 296+54.3

1/16 Cor.

1/16 Cor.

1/16 Cor.

1/4 Cor.

Equation 288+27

Equation 288+27

Equation 288+27

Equation 288+27

Equation 288+27

Equation 288+27

Equation 288+27

Equation 288+27

Equation 288+27

Equation 288+27

Equation 288+27

Equation 288+27

Equation 288+27

Equation 288+27

Equation 288+27

Equation 288+27

Equation 288+27

Equation 288+27

Equation 288+27

Equation 288+27

Equation 288+27

Equation 288+27

Equation 288+27

Equation 288+27

Equation 288+27

Equation 288+27

Equation 288+27

Equation 288+27

Equation 288+27