

This map was prepared for Assessment & Taxation purposes only and was NOT prepared nor is it suitable for legal, engineering or surveying purposes.

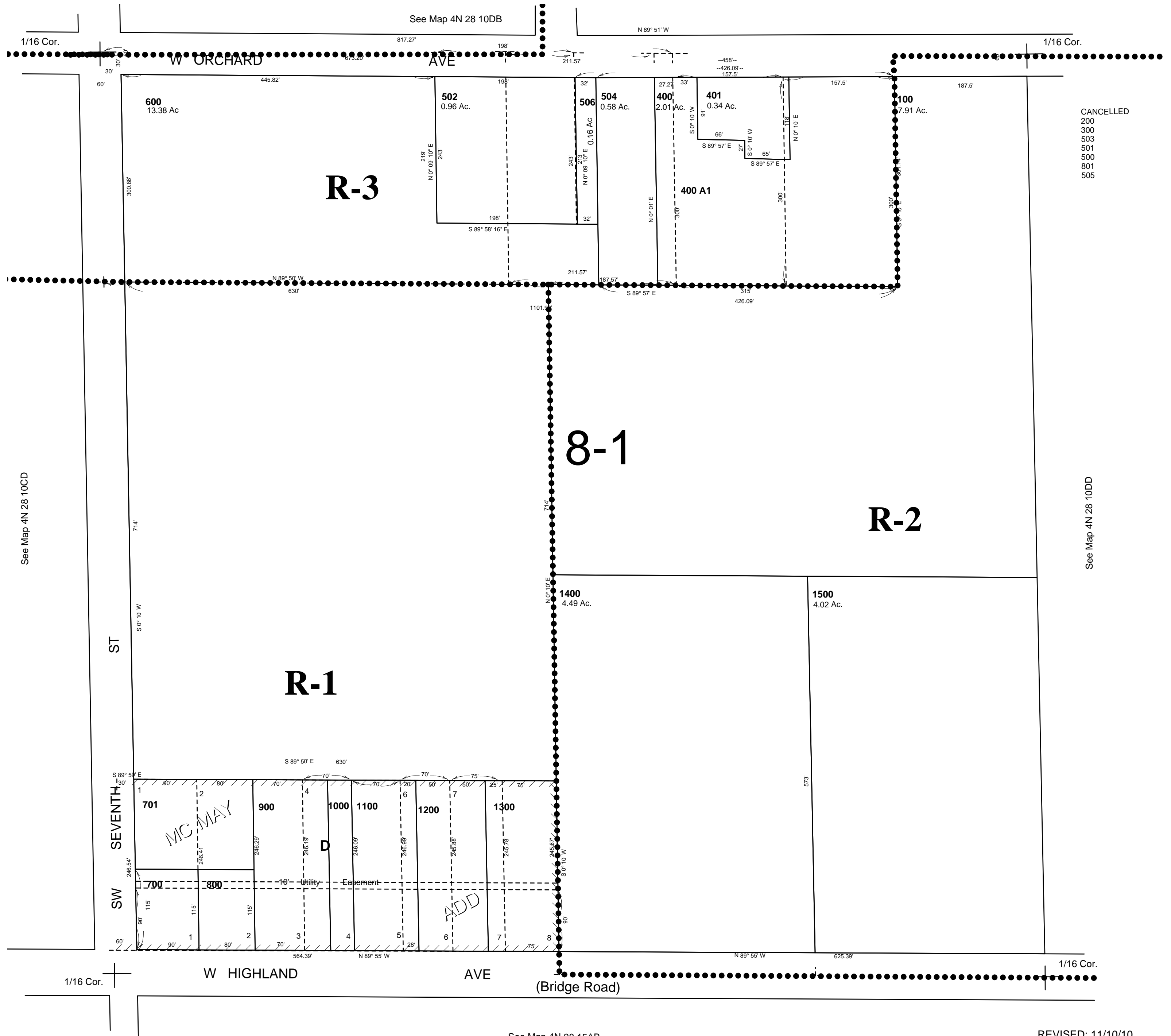
SW1/4 SE1/4 SEC 10 T4NR28E WM UMATILLA COUNTY

SCALE 1"=100'

4N2810DC

Aerial Photo No. NZ-1P-123

CITY OF HERMISTON



See Map 4N 28 10CD

See Map 4N 28 10DD

See Map 4N 28 15AB

REVISED: 11/10/10

4N2810DC