

This map was prepared for Assessment & Taxation purposes only and was NOT prepared nor is it suitable for legal, engineering or surveying purposes.

NW1/4 SW1/4 SEC 10 T4N R28E WM

Revised: 5/28/08

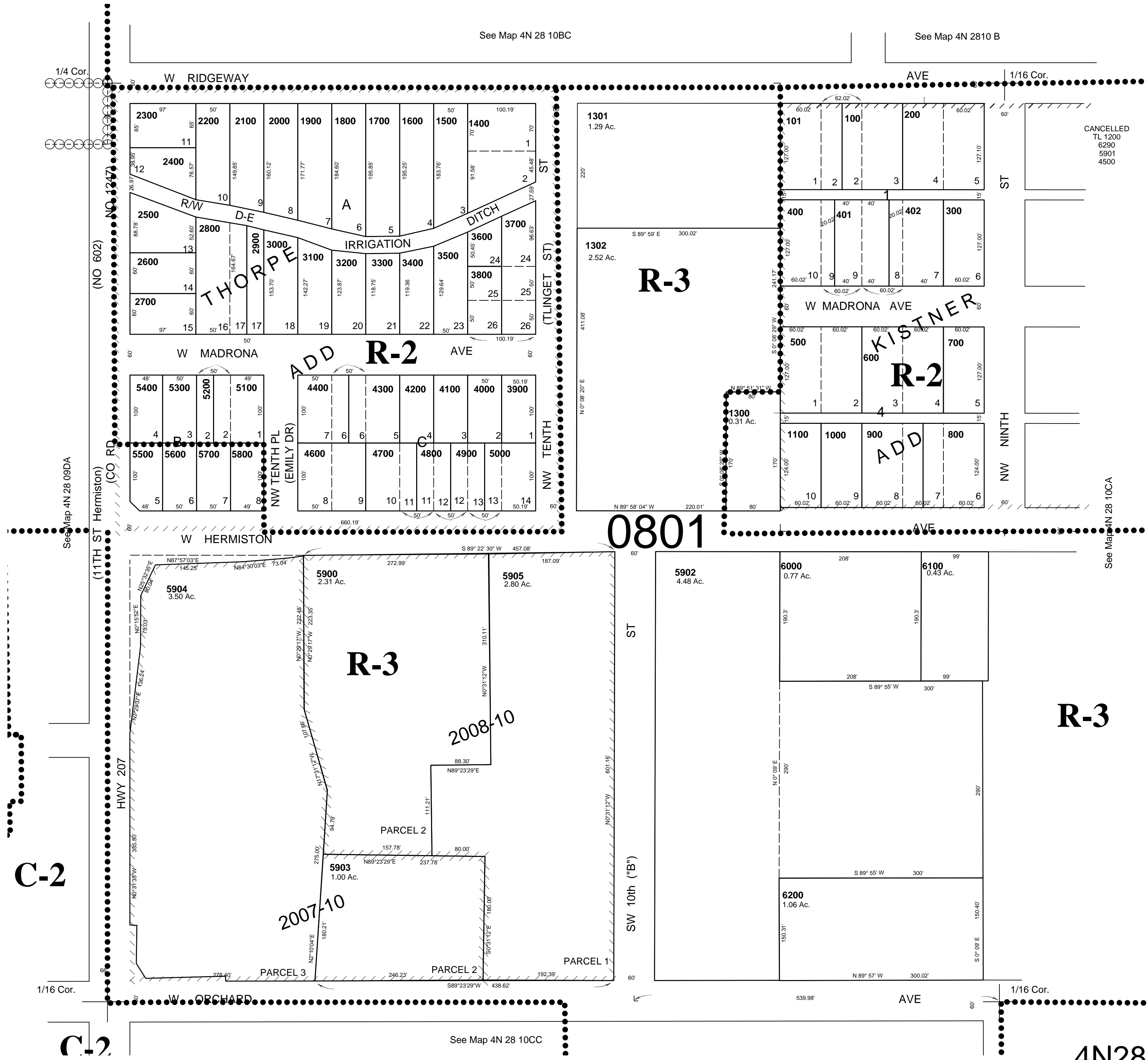
4N 28 10CB

UMATILLA COUNTY

AERIAL PHOTO NO NZ 1P-123

SCALE 1"=100'

CITY OF HERMISTON



4N2810CB