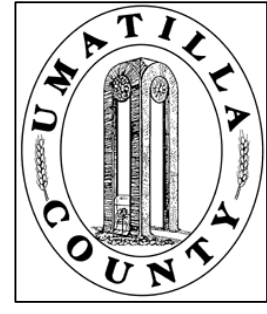


This map was prepared for Assessment & Taxation purposes only and was NOT prepared nor is it suitable for legal, engineering or surveying purposes.

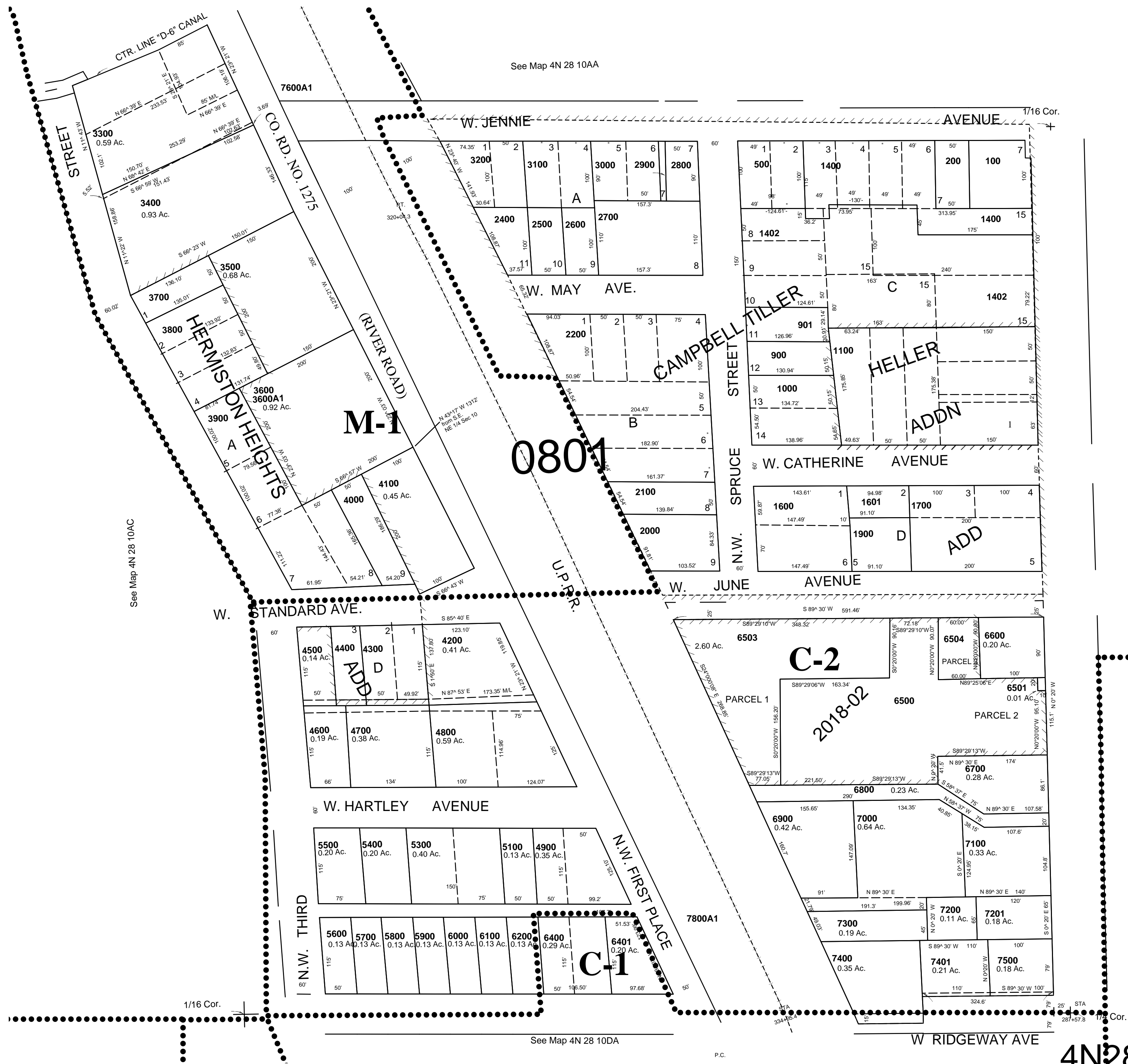


SE1/4 NE1/4 SEC 10 T4N R28E WM UMATILLA COUNTY

4N2810AD

CITY OF HERMISTON

SCALE: 1" = 100'



CANCELLED
 TL 1500
 TL 7402
 3401
 6502
 1800
 2300
 2301
 2302
 2303
 2304
 2305
 7700
 300
 600
 700
 800
 1401
 5200
 4201
 6300
 5000
 400
 1300
 1300
 5302

4N2810AD