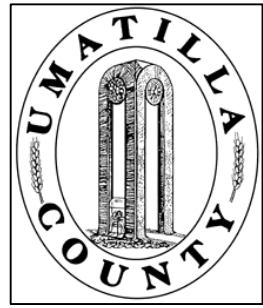


This map was prepared for Assessment & Taxation purposes only and was NOT prepared nor is it suitable for legal, engineering or surveying purposes.

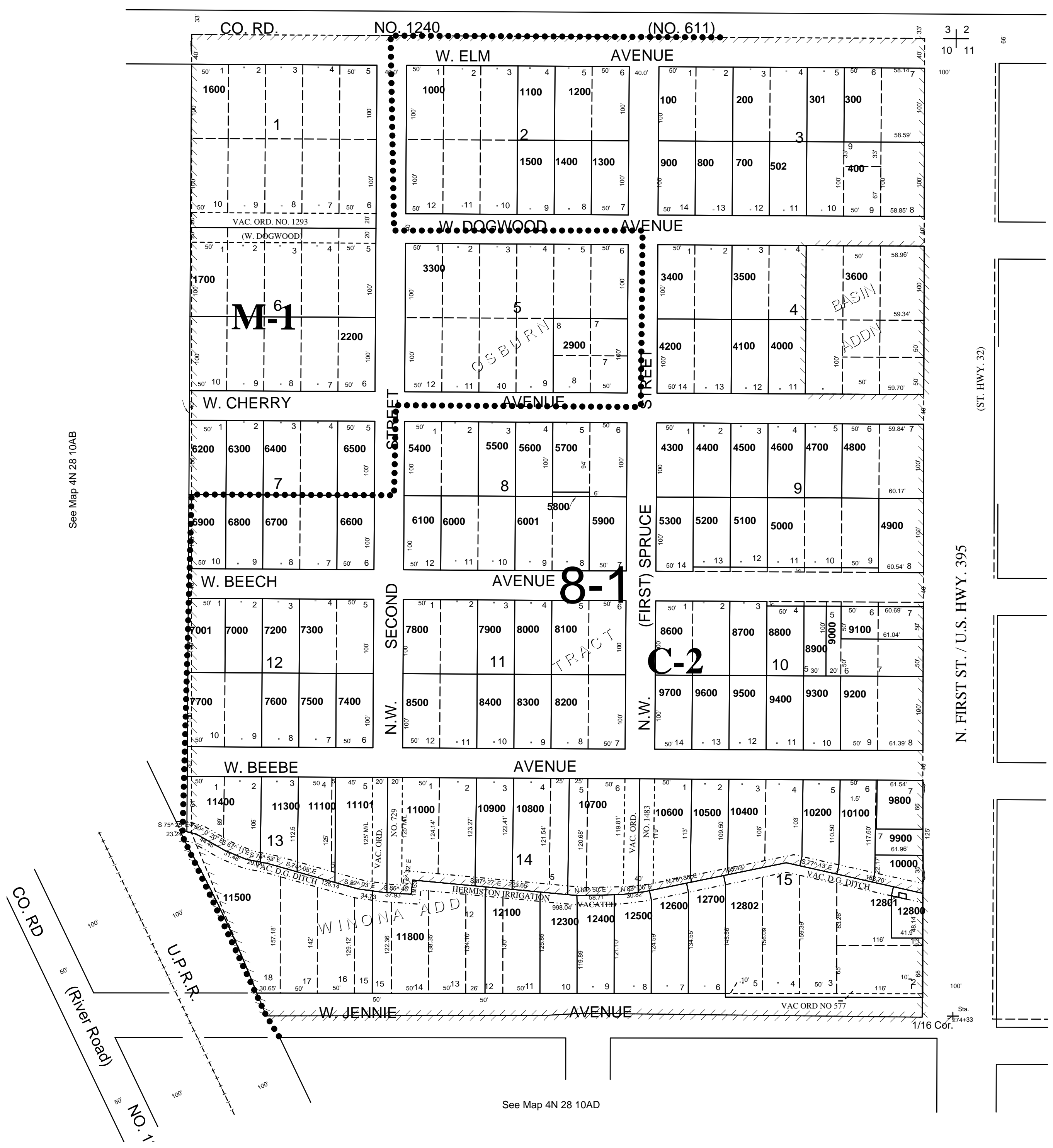


# NE1/4 NE1/4 SEC 10 T4N R28E WM UMATILLA COUNTY, OR

## 4N2810AA CITY OF HERMISTON

SCALE: 1" = 100'

See Map 4N 03D



See Map 4N 28 10AB

See Map 4N 28 10AD

- CANCELLED
- TL 12900
  - 13000
  - 13100
  - 13200
  - 13300
  - 13400
  - 13500
  - 13600
  - 13700
  - 13800
  - 13900
  - 14000
  - 14100
  - 14200
  - 14300
  - 14400
  - 14500
  - 14600
  - 14700
  - 14800
  - 14900
  - 15000
  - 15100
  - 15200
  - 15300
  - 15400
  - 15500
  - 15600
  - 15700
  - 15800
  - 15900
  - 16000
  - 16100
  - 16200
  - 16300
  - 16400
  - 16500
  - 16600
  - 16700
  - 16800
  - 16900
  - 17000
  - 17100
  - 17200
  - 17300
  - 17400
  - 17500
  - 17600
  - 17700
  - 17800
  - 17900
  - 18000
  - 18100
  - 18200
  - 18300
  - 18400
  - 18500
  - 18600
  - 18700
  - 18800
  - 18900
  - 19000
  - 19100
  - 19200
  - 19300
  - 19400
  - 19500
  - 19600
  - 19700
  - 19800
  - 19900
  - 20000
  - 20100
  - 20200
  - 20300
  - 20400
  - 20500
  - 20600
  - 20700
  - 20800
  - 20900
  - 21000
  - 21100
  - 21200
  - 21300
  - 21400
  - 21500
  - 21600
  - 21700
  - 21800
  - 21900
  - 22000
  - 22100
  - 22200
  - 22300
  - 22400
  - 22500
  - 22600
  - 22700
  - 22800
  - 22900
  - 23000
  - 23100
  - 23200
  - 23300
  - 23400
  - 23500
  - 23600
  - 23700
  - 23800
  - 23900
  - 24000

(ST. HWY. 32)  
N. FIRST ST. / U.S. HWY. 395

See Map 4N 28 11BB

Revised: 6/16/09

# 4N2810AA