

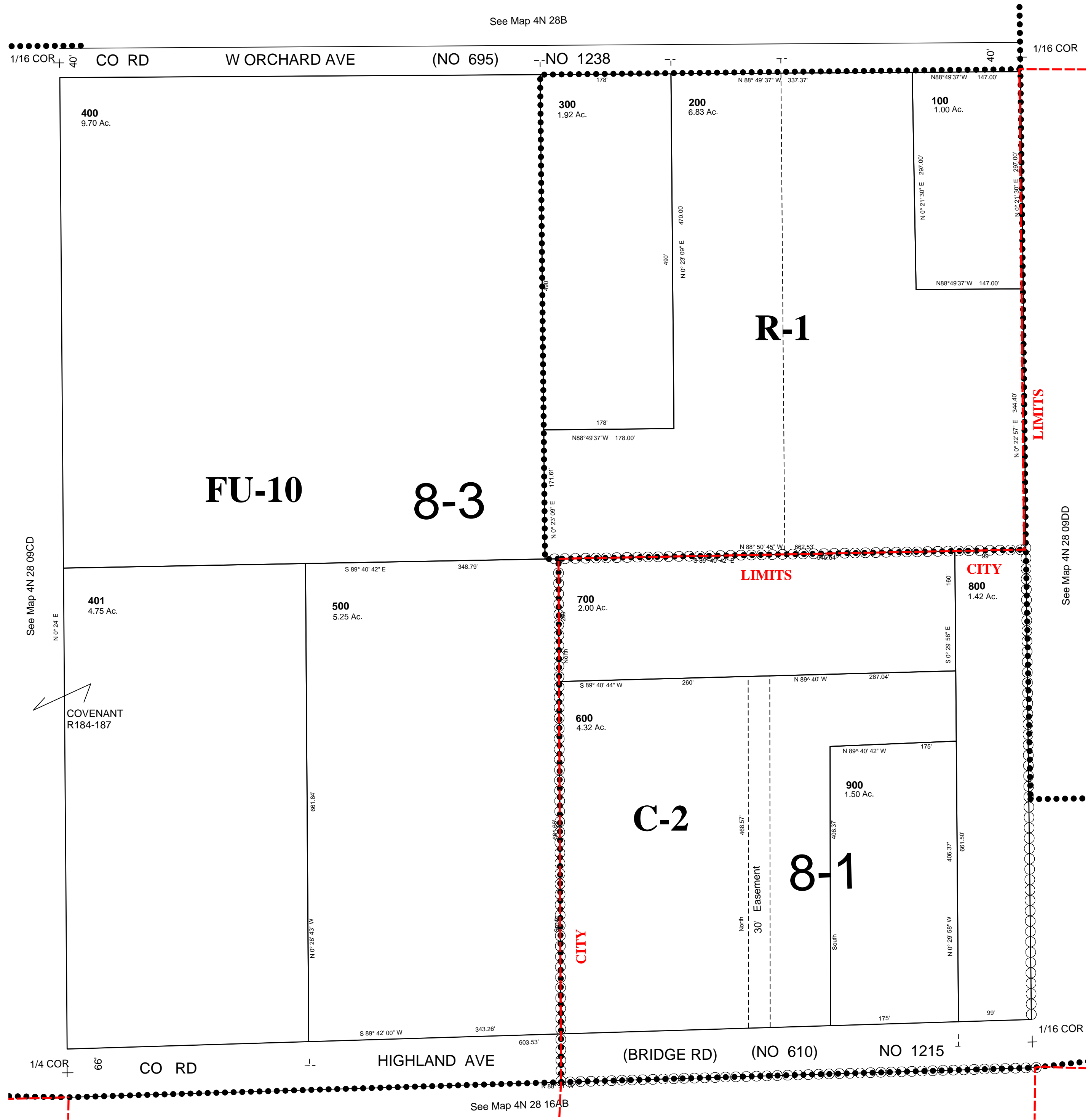
This map was prepared for Assessment & Taxation purposes only and was NOT been prepared nor is it suitable for legal, engineering or surveying purposes.

# SW 1/4 SE 1/4 SEC 9 T4N R28E WM UMATILLA COUNTY

SCALE 1"=100'

**4N2809DC**  
HERMISTON CITY & UGA  
All in Butter Creek Critical Ground Water Area  
All in AH-H Overlay Zone

See Map 4N 28B



**4N2809DC**