

This map was prepared for assessment purposes

SE1/4 SW1/4 SEC 9 T4N R28E WM

9/18/06

4N 28 09CD

UMATILLA COUNTY

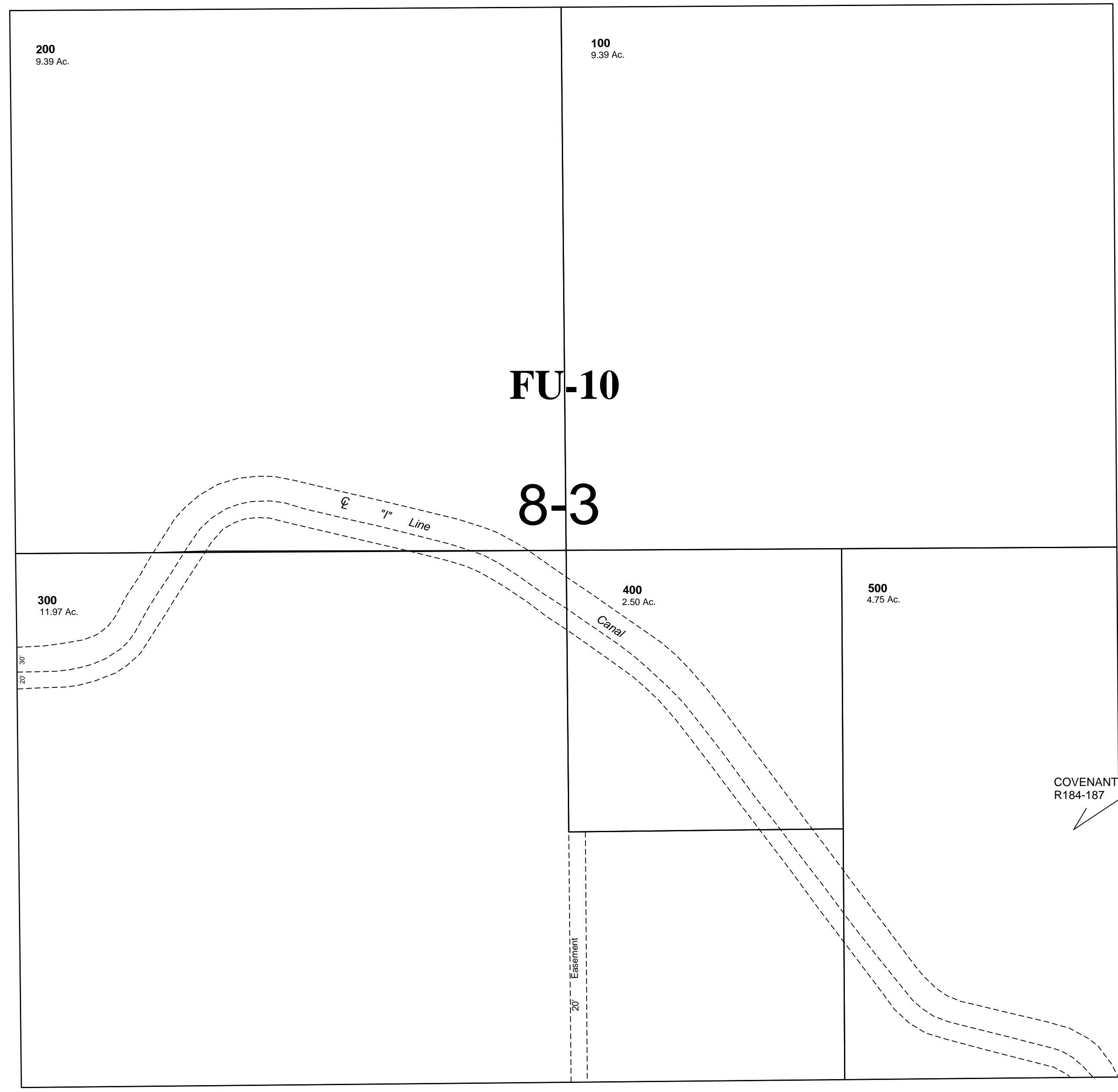
HERMISTON URBAN GROWTH AREA

All in Butter Creek Critical Ground Water Area

SCALE 1"=100'

See Map 4N 28B

1/16 Cor. CO. RD. (W. Orchard Ave.) (No. 695) No. 1238 1/16 Cor.



See Map 4N 28 09CC

See Map 4N 28 09DC

1/16 Cor. CO. RD. (Bridge Rd.) (No. 610) No. 1215 1/4 Cor.

CITY LIMITS

See Map 4N 28B

4N 28 09CD